

# ACTIVE FIRE CURTAINS

FOR DOMESTIC AND RESIDENTIAL PROPERTIES

[WWW.COOPERSFIRE.COM](http://WWW.COOPERSFIRE.COM)



**coopers**

SMOKE AND FIRE CURTAINS

LEADING THE WAY IN FIRE PROTECTION

# COOPERS FIRE

Coopers Fire is a British company manufacturing fire and smoke curtain barrier systems in the United Kingdom for installation worldwide. Coopers invented and patented the Gravity Fail Safe (GFS) Smoke and Fire Curtain, which has become the benchmark for most smoke and fire curtain systems sold around the world today.

At Coopers Fire, we're proud of the fact that every Coopers fire curtain and smoke curtain and their key components are manufactured within the Cooper Group to ISO 9001, ISO 14001 and ISO 45001 at our manufacturing plants in the United Kingdom.



COOPERS FIRE IS A SPECIALIST MANUFACTURER OF SMOKE AND FIRE CURTAIN SYSTEMS.

## ABOUT COOPERS FIRE

Coopers Fire are dedicated to advancing fire and smoke barrier curtain technology and improving ways to safeguard life and property.

This commitment to developing innovative products that are robustly tested and independently certified has meant that Coopers Fire has become the benchmark used by Regulators, Architects, Engineers and other Fire Professionals worldwide.

## COMPLIANCE AND STANDARDS

At Coopers Fire, our commitment to life safety is best expressed through our dedication to ensuring that our fire and smoke curtains meet the highest accreditations and standards.

This means that we test and manufacture every fire and smoke curtain in accordance with the toughest of internationally recognised accreditations, instilling our clients with confidence in fire protection equipment that

# WHAT IS A FIRE CURTAIN?

From architects to homeowners, Coopers Fire residential fire curtain barriers provide you with the means to help create modern, open plan living environments compliant with stringent fire regulations without compromising design. Sympathetic to interior aesthetics, the domestic fire curtain barrier will remain hidden until deployed and is used to replace non-loadbearing walls, fire doors and un-insulated glazing.

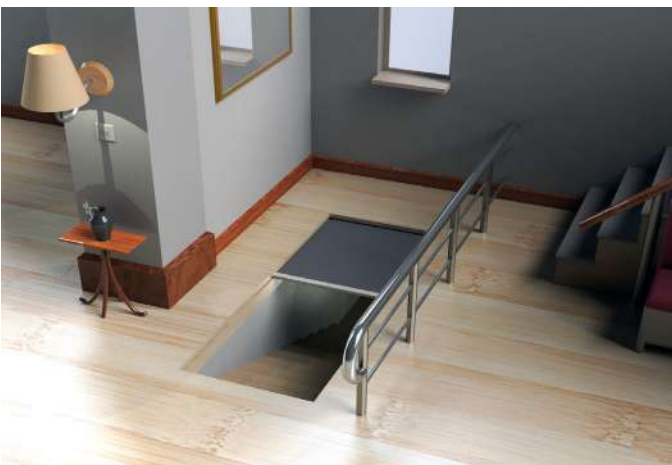
Increasingly specified by designers as an integral component for facilitating open plan environments, Coopers Fire fire curtains are the modern alternative to heavy and cumbersome fire doors and is an aesthetically pleasing replacement for traditional, industrial looking shutters.

## WHAT A FIRE CURTAIN CAN REPLACE?

- Wall
- Door
- Glazing
- Serving Hatches
- Ceiling



## APPLICATIONS



Coopers commitment to life safety has led us to develop a wide range of fire and smoke curtains approved to protect every type of building application. You may wish to remove a wall and require a vertical fire curtain to protect a means of escape or install a horizontal fire curtain for compartmentation. Our fire curtains provide a modern, non-invasive alternative to traditional fire protection.



## APPLICATION

- Kitchen
- Hall and lobby
- Loft and cellar
- Protecting non fire rated glazing forming a boundary protection
- Laundry shoot
- Serving hatches
- Walls and floors forming a protective means of escape
- Skylight or roof lantern

## CONTROLS



MK5 CONTROL BOX

### MK5 (CONTROLLER FOR A SINGLE SMOKE OR FIRE CURTAIN)

The MK5 Controller is a control system option for a single Smoke or Fire Curtain. The MK5 system uses Smoke / Fire Curtains with 24Vdc permanent magnet electrical motor fitted with an internal 24Vdc electromagnetic brake, as standard. The MK5 offers a wide range of ancillaries / optional extras, all using simple plug / socket connections.



### Emergency Egress Button Deluxe

The Emergency egress button delux has touch sensitive operation, concealed fixings, twin LED status indicators, stainless steel touch plate and die cast aluminium body.



### Emergency Egress Button R

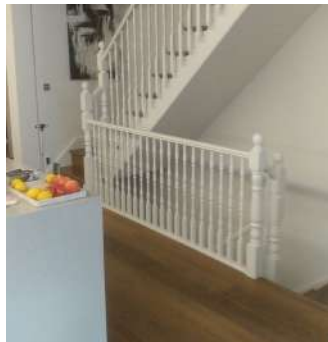
The 'push and release' action of the ERB signals the Fire Curtain to retract and hold, before redeploying. This allows occupants to egress through the opening, before closing again after a set time period.



### Emergency Egress Button Deluxe

The Emergency Egress Bronze Retract Button has an Antique Bronze finish and can be flush or surface mounted (back box minimum depth of 35mm, by others).

A collection of installed fire curtains within domestic and residential properties, in the open and closed positions, showing how key components such as side guides and headboxes can be recessed and hidden from view.



## 1. WHY WOULD I NEED A FIRE CURTAIN FOR MY HOME?

Your home is legally required to comply with stringent fire regulations designed to help protect you and your family from the deadly effects of fire and smoke. This legislation states that:

1. Your home needs to maintain a protected means of escape and / or;
2. Provide an effective means to compartmentalise a room or lobby (over a defined size) to contain a fire.

Enforced by a Building Control Body, meeting these regulations will determine whether your extension, renovations or new building project meets Building Control Approval.

## 2. WHAT STANDARD AND COMPLIANCE DO I NEED?

Standards are your best means of ensuring your fire curtain will protect you in the event of a fire. **If the fire curtain does not carry the correct certification, then it's very likely that it hasn't been tested to the correct standards, putting both your home and its occupants at risk.**

Furthermore, if the fire curtain doesn't meet the correct standards, your projects will fail to meet building control approval.

1. For protecting a means of an escape, it's vital that your fire curtain meets with BS 8524 and is certified to provide a tenable area. This stringent requirement is specifically designed to provide any occupants evacuating a building with protection from heat radiation.
2. If replacing a non-loadbearing wall, then ask for evidence that the fire curtain is compliant to BS 8524.
3. Compartmentation of a large basement or kitchen/dining room again meet BS 8524 and must provide the required minutes protection from fire.

For advice on your project, it's important that you seek the professional advice of your appointed Approved Building Control Authority before you contact a fire curtain supplier.

## 3. SHOULD I SEEK DIRECTION FROM MY BUILDING CONTROL AUTHORITY?

Before you contact a fire curtain supplier, it's necessary to seek the advice of your appointed Building Control Body. This will quickly help you to establish the correct specification of the fire curtain you require and is the first step to guaranteeing that your project meets fire regulations.

Once you have a specification, which may include details regarding retractable button, smoke control and voice warning systems, it's time to contact a reputable supplier for a quotation.

## 4. WHAT IS TOTAL GRAVITY FAIL-SAFE AND DOES MY FIRE CURTAIN NEED IT?

Total Gravity Fail Safe or TGFS is a backup system designed to ensure that your fire curtain deploys to a closed position, even if your property suffers a power failure or mains short circuit.

For a fire curtain to be compliant with stringent fire regulations, TGFS must be fitted. TGFS systems are required by BS 8524 and its key to ensuring your fire curtain meets Building Authority approval.

## 5. WHAT HAPPENS AFTER MY FIRE CURTAIN HAS BEEN INSTALLED?

Much like a gas safety certificate, the organisation responsible for installing and commissioning your fire curtain is required to issue you with the correct certification. This commissioning certificate is to certify that your fire curtain has met the stipulated standards and has been installed by a third party approved installer and operates to fire regulations. **It is this documentation that Building Control Authorities and insurers commonly ask for as proof of regulatory compliance.**

For information, to get a quote  
or to book a CPD workshop

Please call:

**+44 (0)2392 454 405**

© Coopers Fire. All content and products are copyright  
of Coopers Fire. Registered in England Number: 2010274.  
Multiple patents granted and pending.

Coopers Fire  
Ignis House, Houghton Avenue  
Waterlooville, Hampshire  
PO7 3DU. United Kingdom

Phone: +44 (0)2392 454 405  
Email: [info@coopersfire.com](mailto:info@coopersfire.com)  
Web: [www.coopersfire.com](http://www.coopersfire.com)

v07 Nov 2023

Coopers Fire has a policy  
of continuous product  
improvement.

As such we reserve the  
right to change design and  
specifications without prior  
notice.

Please check our website  
for the latest information.



**coopers**

SMOKE AND FIRE CURTAINS

LEADING THE WAY IN FIRE PROTECTION