

## COOPERS FIRE CURTAIN INSTALLATIONS

### CONCERTINA™ THE INVISIBLE ACTIVE FIRE CURTAIN BARRIER ASSEMBLY

At Coopers, our commitment to advancing fire protection technology led our R&D team to develop the groundbreaking FireMaster® Concertina™ fire curtain and the world's first self-supporting fire curtain, removing the need for visible columns and supports to achieve absolute open plan design.

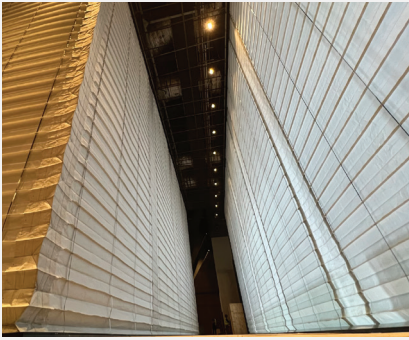
Third Party Accredited to provide 4 hours protection from fire, the unique FireMaster® Concertina™ provides designers with the means to create modern, open plan atria, offices and retail environments by replacing non-loadbearing firewalls, fire shutters, un-insulated glazing and sprinklers. Developed to fit all manner of applications, every FireMaster® Concertina™ uniquely tailored and is manufactured to fit L shapes, curves, squares and rectangles, trapezoid and multi-sided faceted circles.



COOPERS FIRE HAVE A GLOBAL REACH WITH CASE STUDY  
EXAMPLES FROM THE FOLLOWING COUNTRIES

- Australia
- England
- Estonia
- Germany
- Qatar
- Saudi Arabia
- Scotland
- Singapore
- United Arab Emirates

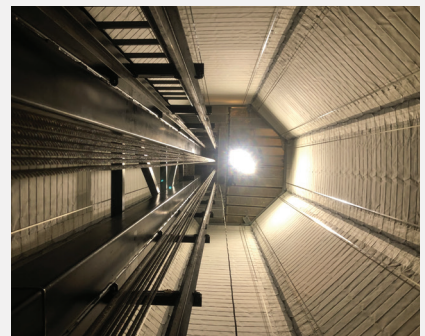
# FIREMASTER® CONCERTINA™ FIRE CURTAIN INSTALLATIONS



## **Battersea Power Station**, London, UK | 2022 Retail, Offices and Residential | Compartmentation, Smoke and Atrium

**Two FireMaster Open Concertina fire curtains** with a 15m drop and 25m width, was designed, installed and manufactured for the newly renovated mixed use building Battersea Power Station. With record breaking sizes, the bespoke fire curtains required unique engineering and innovative design, to allow the curtain to perform and provide fire safety as required.

Coopers Fire are really proud to announce that we won the Association for Specialist Fire Protection (ASFP) award for Best Installation / Project of the Year at the ASFP Awards 2022 for our work at Battersea Power Station. The project was the largest Coopers Fire had ever undertaken, which took place at the largest construction site in Europe at the time, in the middle of the pandemic, without 5,000 construction workers on site – quite an accomplishment.



## **Niguliste Church, Tallinn**, Estonia | 2024 Museum & Historic Church | Compartmentation, Lift and Egress Route

**FireMaster Concertina “Closed” Fire Curtain** offers a solution that seamlessly blends fire safety with aesthetic preservation. Three curtains in total with varying drops of 3m, 9.8m, and an impressive 15.5m (the longest Concertina drop globally), these curtains not only meet the fire risk requirements but also ensure an unobstructed visual experience for visitors. The project architects, KOKO architects, exemplified a harmonious convergence of safety measures and architectural elegance.

# FIREMASTER® CONCERTINA™ FIRE CURTAIN INSTALLATIONS



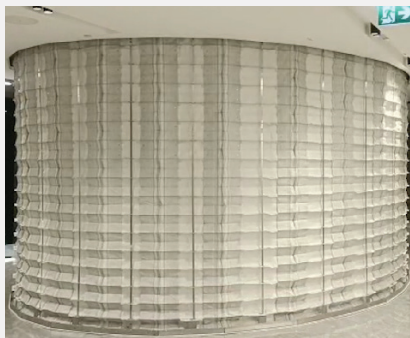
**Wallyford Learning Campus** Scotland | 2023  
Education | Compartmentation and Stairs

**FireMaster 3 sided Open Concertina** (each side spanning at least 7m width) provides fire protection without the requirement for any corner posts or beams. The fire alarm activated deployment of the FireMaster Concertina creates a dependable barrier, sealing off the void in the event of a fire. This effectively prevents the passage of fire thereby safeguarding the school's occupants and enabling secure evacuation.



**KAFD Metro Station** Riyadh, Saudi Arabia | 2022  
Railway Station | Compartmentation and Egress Routes.

The **FireMaster Concertina fire curtain** was installed to limit the initial development of a fire, to prevent the spread of fire, and to protect escape routes in the newly built KAFD Metro Station in Riyadh. The Station has six platforms over four public floors and two levels of underground car parking. FireMaster Concertina fire curtains allow for open plan design whilst providing required levels of fire protection.



**ICD Brookfield Place** Dubai, United Arab Emirates | 2023  
Commercial Offices and Retail | Compartmentation and Stairs.

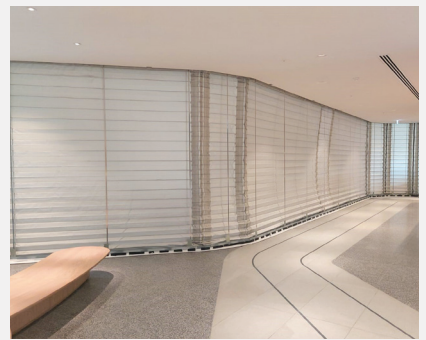
**FireMaster Closed Concertina** was designed in to ICD Brookfield Place which has over 1 million square feet of open plan office and retail space. The innovative FireMaster Closed Concertina was aesthetically designed to provide fire protection around multiple stairways without the need of columns, fire doors or lobbies.

# FIREMASTER® CONCERTINA™ FIRE CURTAIN INSTALLATIONS



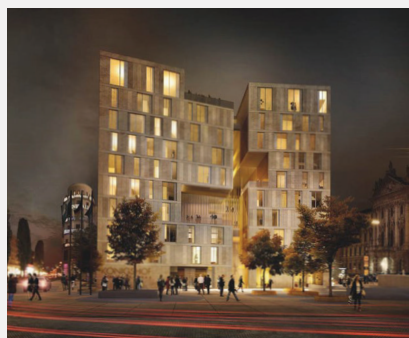
## Monash Chancellery University Australia | 2019 Education | Compartmentation and Atrium

Two circular FireMaster® Concertina™ fire curtains were installed to protect the atrium in this University in Australia. In order to maintain the free flow of light and achieve fire safety standards, a fire curtain that won't obstruct the space needed to be incorporated into the design. The bespoke design meant the FireMaster Concertina fire curtain was the perfect choice and was able to fit the bubble shaped atrium.



## 100 Liverpool Street London, UK | 2020 Retail & Commercial Offices | Compartmentation and Atrium

An Open FireMaster Concertina fire curtain with a 3.4 metre drop was manufactured for this mixed use building in Liverpool Street, London, UK. This bespoke engineered 'S' shaped fire curtain was modeled in Solidworks to ensure full interface and coordination with the surrounding area within the building.



## Konigshof Hotel Munich Germany | 2023 Hotel | Compartmentation and Egress Route

FireMaster Concertina Egress Fire Curtain features the benefit of an integral egress door allowing the safe evacuation of building occupants or emergency services through the barrier without the need to lift the barrier once deployed. The Konigshof hotel utilises the drop down curtains to avoid the need for lobbies and columns. The hotel's design includes a frontal cut that travels vertically through the hotel creating open plan spaced through a series of compressed and expanded indoor spaces, visually connecting the public zones of the programme and letting daylight inside as well as the views towards Karlsplatz.

# FIREMASTER® CONCERTINA™ FIRE CURTAIN INSTALLATIONS



**Dunnhumby** London, UK | 2016  
**Commercial Offices | Compartmentation and Stairs**

**Open, U-shaped FireMaster® Concertina™ fire curtains** installed in the refurbished former Ford Motors warehouse in Hammersmith, West London.



**Google** Singapore | 2018  
**Retail & Commercial Offices | Compartmentation and Atrium**

**Three, irregular shaped Closed FireMaster Concertina fire curtains** were installed at Google offices in Singapore. A four, six and eight sided version were installed with the four side version having a large drop of over 8 metres.



**Rolling Stock Yard** London, UK | 2020  
**Retail & Commercial Offices | Boundary Protection**

**An Open FireMaster® Concertina™ fire curtain** installed in a large mixed use building in central London. To avoid a post and side guides in the corner of the window, a FireMaster Concertina was installed to fit the shape of the window and drop to prevent the spread of fire to any nearby buildings.

# FIREMASTER® CONCERTINA™ FIRE CURTAIN INSTALLATIONS



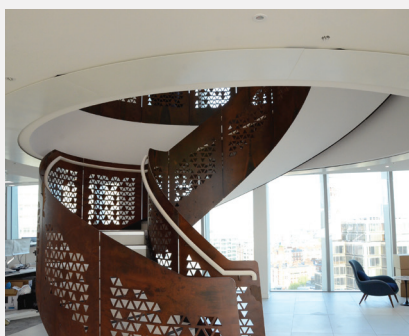
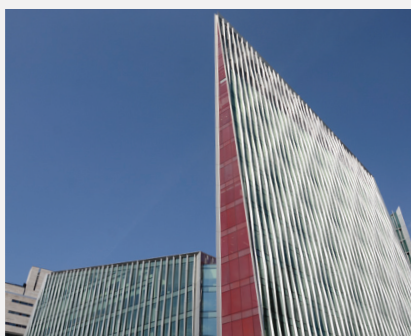
**Bitzer** Germany | 2019  
Commercial Offices | Compartmentation & Boundary Protection

8 three-sided open FireMaster® Concertina™ fire curtains installed in the new headquarters of a world renowned German company in the technology of refrigeration and air conditioning. The seventeen-storey building was divided up so that two floors were connected with a staircase within the atria on the outer edge of the building. The feature staircase bridges the two floors and to avoid a lobby or doors at the top and or bottom of the staircase, the architects needed to provide a fire curtain solution around the atrium over every other level.



**Paya Lebar** Singapore | 2019  
Commercial Offices | Compartmentation and Stairs

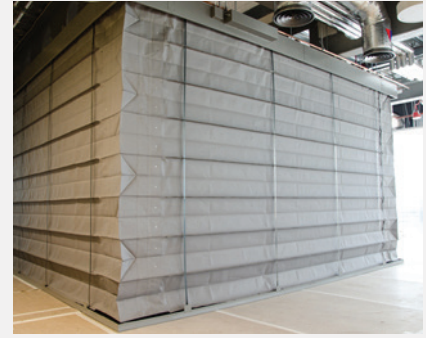
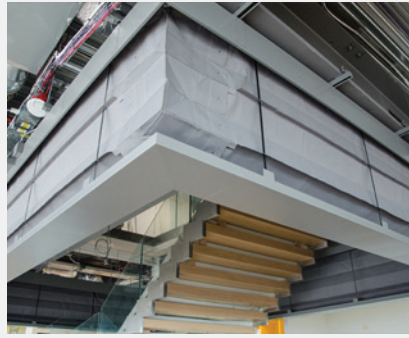
8 closed FireMaster® Concertina™ fire curtains were installed in this state-of-the-art mixed use building in Singapore. The 4 hour rated fire curtains were the largest Concertina fire curtains to date at 31 metres long.



**Nova, Victoria** London, UK | 2017  
Retail & Commercial Offices | Compartmentation

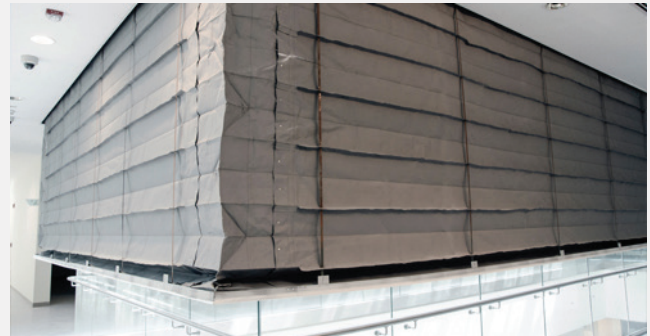
Closed, circular FireMaster® Concertina™ fire curtain installed in a large mixed use building in central London. To avoid a door and lobby at the top or bottom of the stairs for fire separation, a fire curtain was designed in conjunction with the feature spiral staircase. The FireMaster Concertina offers up to four hours fire resistance or heights to 5 metres or two hours for heights to 8 metres.

# FIREMASTER® CONCERTINA™ FIRE CURTAIN INSTALLATIONS



**Aldgate Tower** London, UK | 2015  
Commercial Offices | Compartmentation & Protected Means of Escape

Closed, rectangular FireMaster® Concertina™ fire curtain installed in the 18 floor, state-of-the-art 317,000 sq ft Aldgate Tower in the Aldgate commercial area of Central London. The Concertina fire curtain is a perfect solution when requiring fire compartmentation around a staircase as it offers a virtual firewall creating a lobby once the curtain has been deployed. The innovative Concertina fire curtain fully encapsulates the staircase from the 11th to the 12th floor in the event of a fire.



**Leabaib Health Centre - HMC** Doha, Qatar | 2015  
Healthcare | Compartmentation and Atrium, Lobbies & Reception

Closed, rectangular FireMaster® Concertina™ fire curtain installed around the atrium is the first of its kind installed in the State of Qatar and one of the largest installed in the Middle East. The 23m long by 5m wide Concertina is installed on the first floor around the reception atrium and provides a fire break between the ground floor and first floor. By installing the FireMaster Concertina meant it would provide the building with an approved, non-invasive means of fire protection that would satisfy the fire regulations as well as ensuring that the open plan design remained as intended.



**Apple HQ** Singapore | 2016  
Commercial Offices | Compartmentation and Stairs and Escalators

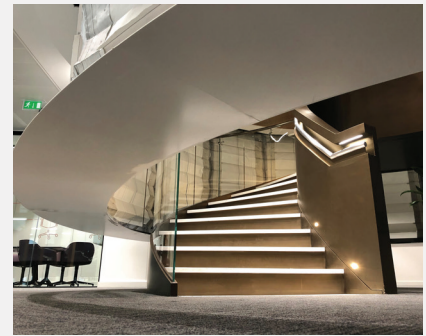
Multiple Rectangular Closed and U-shaped Open FireMaster® Concertina™ fire curtains installed around the staircase in Apple HQ, Singapore. In the event of a fire, the fire curtain will deploy around the staircase, acting as a fire break between the floors. As no corner posts are required for the Concertina product, it means the stairs remain clear of any guides and the fire curtains remains invisible from view until needed.

# FIREMASTER® CONCERTINA™ FIRE CURTAIN INSTALLATIONS



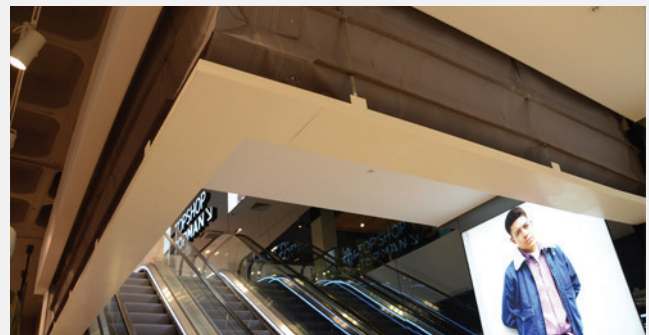
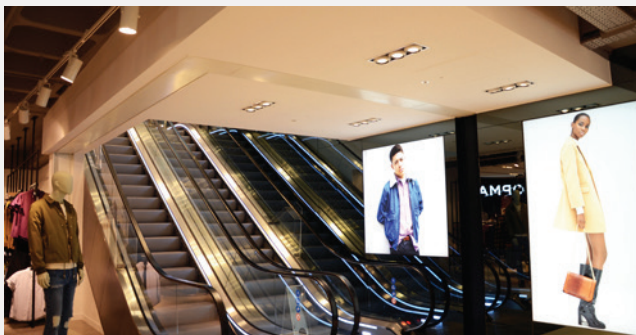
**Five Guys - Dubai Marina Mall** Dubai, UAE | 2015  
Retail and Restaurants & Leisure | Compartmentation & Protected Means of Escape

A 7770mm long by 5230mm wide, **open, two-sided FireMaster® Concertina™ fire curtain** installed in a global fast food chain of Five Guys restaurants with a new outlet located in the popular Dubai Marina Mall in Dubai. The Concertina fire curtain is installed around the main counter in the premises. The counter divides up the restaurant from the serving area and kitchen. In the event of a fire, the fire curtain will deploy around the counter, acting as a fire break between the kitchen and restaurant recognised as the modern alternative to firewalls, fire doors and glazing.



**One Creechurch Place** London, UK | 2019  
Commercial Offices | Compartmentation & Protected Means of Escape

**5 closed, circular FireMaster® Concertina™ fire curtains** were installed around an open staircase over 5 floors within this open plan office space preventing the spread of fire through the building whilst providing compartmentation. To avoid a door and lobby at the top or bottom of the stairs for fire separation, a fire curtain was designed in conjunction with the feature spiral staircase. The design of the fire curtain meant that the curtain was concealed within the ceiling making it almost invisible until deployed.



**Topshop Store** Oxford, UK | 2015  
Retail | Compartmentation & Protected Means of Escape

**Open, two-sided FireMaster® Concertina fire curtain** installed in the new Topshop and Topman store in Oxford, offering a fire break around the escalator between the basement and ground floor. By installing the 5760mm by 3750mm with a drop of 3935mm, L shaped FireMaster Concertina meant it would provide the building with an approved, non-invasive means of fire protection that would satisfy the fire regulations as well as ensuring that the open plan design remained as intended. The complete system is assessed in accordance with BS EN 1634-1:2008 for 240 minutes Integrity.



# FIREMASTER® CONCERTINA™ FIRE CURTAIN INSTALLATIONS



**Google Offices** London, UK | 2014  
**Commercial Offices | Compartmentation and Stairs and Escalators**

**Closed, rectangular FireMaster® Concertina™ fire curtain** installed in Google HQ Offices in London. The headbox was painted bright yellow to match the staircase being protected. In this case, instead of trying to conceal the headbox it was made a feature.



**Selfridges** London, UK | 2013  
**Retail | Compartmentation and Stairs and Escalators**

**Closed, rectangular FireMaster® Concertina™ fire curtain** retrofitted in one of London's oldest Department Stores in Selfridges, Oxford Street, London invisibly protecting escalator atrium on three floors. Their shopping floors were structured so that goods could be made more accessible to customers and just over a century later Selfridges is still at the cutting edge of creating greater, more open shopping space for its customers.



**People's Choice Credit Union** Australia | 2015  
**Commercial Offices | Compartmentation and Stairs and Escalators**

**Multiple closed, rectangular FireMaster® Concertina™ fire curtain** were installed over several floors. Once activated and fully deployed the Concertina fire curtain replaces the requirement for a lobby or door at both ends of the stairs and protects the occupants from the spread of fire and smoke from one floor to the next.

# FIREMASTER® CONCERTINA™ FIRE CURTAIN INSTALLATIONS



**Oil Search** Sydney, Australia | 2012  
**Commercial Offices | Atrium, Lobbies & Receptions**

**Closed, circular FireMaster® Concertina™ fire curtain** installed in a prestigious Sydney head office of the Australian Exploration Company Oil Search. Oil Search wanted to connect all three floors, fully utilise the inter-tenancy stairwell whilst amplifying the floor to ceiling glass windows to give uninterrupted views of Sydney. Key to achieving this was the need to comply with stringent building and fire regulations with the major challenge being the need to prevent the central inter-tenancy spiral stairwells from channelling smoke and heat throughout the building in the event of a fire.



**Harley Place** London, UK | 2015  
**Domestic Property | Compartmentation and Stairs**

**Open, L-shaped FireMaster® Concertina™ fire curtain** installed in a domestic property in central London. This fire curtain acts as a fire break between the first floor and second floor allowing the designer to remove a door or lobby at the bottom or top of the stairs. FireMaster Concertina product provides occupants with a safe means of escape in the event of a fire.



**Hamad Medical Centre** Doha, Qatar | 2015  
**Commercial Offices | Compartmentation**

**Open, multi-sided FireMaster® Concertina™ fire curtains** installed around the reception counters in the Hamad Medical Centre in Doha, Qatar. The building's design configuration was expected to meet fire regulations and used fire curtains to prevent the spread of fire from electrical rooms behind the counters. Coopers L and U-shaped Concertina fire curtains helped to meet these stringent fire regulations without compromising design of this first class healthcare facility.

# FIREMASTER® CONCERTINA™ FIRE CURTAIN INSTALLATIONS

COOPERS FIREMASTER® CONCERTINA™ FIRE CURTAINS ARE INSTALLED IN MANY PROJECTS AROUND THE GLOBE

**Coopers Fire have installed fire curtains and smoke barriers in a number of prestigious buildings around the world to help protect the occupants from the harmful effects of smoke and fire.**

Coopers are proud of the projects we have worked on and were chosen to install in these prestigious projects as we are recognised as the modern alternative to firewalls, fire doors and glazing.

Fire and smoke curtains give designers the freedom to design modern, open plan spaces without compromising fire safety.



For information, to get a quote  
or to book a CPD workshop

Please call:  
**+44 (0)2392 454 405**

or E-mail: [info@coopersfire.com](mailto:info@coopersfire.com)  
[WWW.COOPERSFIRE.COM](http://WWW.COOPERSFIRE.COM)

Coopers Fire Ltd  
Ignis House, Houghton Avenue  
Waterlooville, Hampshire  
PO7 3DU. United Kingdom

Phone: +44 (0)2392 454 405  
Email: [info@coopersfire.com](mailto:info@coopersfire.com)  
Web: [www.coopersfire.com](http://www.coopersfire.com)

Coopers Fire Ltd has a policy of  
continuous product improvement.

As such we reserve the right to  
change design and specifications  
without prior notice.

Please check our website for the  
latest information.

v05 Apr 2024