

FIREMASTER® & SMOKESTOP CONCERTINA™ INSTALLATIONS

WWW.COOPERSFIRE.COM



LEADING THE WAY IN FIRE PROTECTION

COOPERS FIRE CONCERTINA CURTAIN INSTALLATIONS



CONCERTINA™ THE INVISIBLE ACTIVE FIRE CURTAIN BARRIER ASSEMBLY

At Coopers Fire, our commitment to advancing fire protection technology led our R&D team to develop the groundbreaking Concertina™ fire and smoke curtain and the world's first self-supporting fire curtain, removing the need for visible columns and supports to achieve absolute open plan design.

Third Party Accredited to provide 4 hours protection from fire and smoke, the unique Concertina™ provides designers with the means to create modern, open plan atria, offices and retail environments by replacing non-loadbearing firewalls, fire shutters, un-insulated glazing and sprinklers. Developed to fit all manner of applications, every Concertina™ can be manufactured to fit L shapes, curves, squares and rectangles, trapezoid and multi-sided faceted circles.



CONCERTINA™ FIRE AND SMOKE CURTAIN INSTALLATIONS

Below are some examples of where the Concertina™ fire and smoke curtain has been installed by our trained teams around the UK and the rest of the world.



Monash Chancellery University Australia | 2019
Education | Compartmentation and Atrium

Two circular FireMaster® Concertina™ fire curtains were installed to protect the atrium in this University in Australia. In order to maintain the free flow of light and achieve fire safety standards, a fire curtain that won't obstruct the space needed to be incorporated into the design. The bespoke design meant the FireMaster Concertina fire curtain was the perfect choice and was able to fit the bubble shaped atrium.



100 Liverpool Street London, UK | 2020
Retail & Commercial Offices | Compartmentation and Atrium

An Open FireMaster Concertina fire curtain with a 3.4 metre drop was manufactured for this mixed use building in Liverpool Street, London, UK. This bespoke engineered 'S' shaped fire curtain was modeled in Solidworks to ensure full interface and coordination with the surrounding area within the building.



Oil Search Sydney, Australia | 2012
Commercial Offices | Atrium, Lobbies & Receptions

Closed, circular FireMaster® Concertina™ fire curtain installed in a prestigious Sydney head office of the Australian Exploration Company Oil Search. Oil Search wanted to connect all three floors, fully utilise the inter-tenancy stairwell whilst amplifying the floor to ceiling glass windows to give uninterrupted views of Sydney. Key to achieving this was the need to comply with stringent building and fire regulations with the major challenge being the need to prevent the central inter-tenancy spiral stairwells from channelling smoke and heat throughout the building in the event of a fire.



Aldgate Tower London, UK | 2015
Commercial Offices | Compartmentation & Protected Means of Escape

Closed, rectangular FireMaster® Concertina™ fire curtain installed in the 18 floor, state-of-the-art 317,000 sq ft Aldgate Tower in the Aldgate commercial area of Central London. The Concertina fire curtain is a perfect solution when requiring fire compartmentation around a staircase as it offers a virtual firewall creating a lobby once the curtain has been deployed. The innovative Concertina fire curtain fully encapsulates the staircase from the 11th to the 12th floor in the event of a fire.



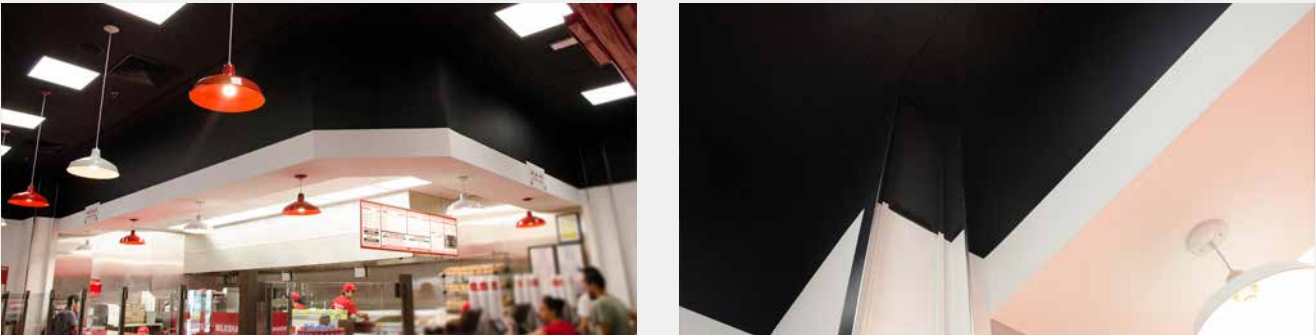
Leabaib Health Centre - HMC Doha, Qatar | 2015
Healthcare | Compartmentation and Atrium, Lobbies & Reception

Closed, rectangular FireMaster® Concertina™ fire curtain installed around the atrium is the first of its kind installed in the State of Qatar and one of the largest installed in the Middle East. The 23m long by 5m wide Concertina is installed on the first floor around the reception atrium and provides a fire break between the ground floor and first floor. By installing the FireMaster Concertina meant it would provide the building with an approved, non-invasive means of fire protection that would satisfy the fire regulations as well as ensuring that the open plan design remained as intended.



Apple HQ Singapore | 2016
Commercial Offices | Compartmentation and Stairs and Escalators

Multiple Rectangular Closed and U-shaped Open FireMaster® Concertina™ fire curtains installed around the staircase in Apple HQ, Singapore. In the event of a fire, the fire curtain will deploy around the staircase, acting as a fire break between the floors. As no corner posts are required for the Concertina product, it means the stairs remain clear of any guides and the fire curtains remains invisible from view until needed.



Five Guys - Dubai Marina Mall Dubai, UAE | 2015
Retail and Restaurants & Leisure | Compartmentation & Protected Means of Escape

A 7770mm long by 5230mm wide, **open, two-sided FireMaster® Concertina™ fire curtain** installed in a global fast food chain of Five Guys restaurants with a new outlet located in the popular Dubai Marina Mall in Dubai. The Concertina fire curtain is installed around the main counter in the premises. The counter divides up the main restaurant from the serving area and kitchen. In the event of a fire, the fire curtain will deploy around the counter, acting as a fire break between the kitchen and restaurant recognised as the modern alternative to firewalls, fire doors and glazing.



One Creechurch Place London, UK | 2019
Commercial Offices | Compartmentation & Protected Means of Escape

5 closed, circular FireMaster® Concertina™ fire curtains were installed around an open staircase over 5 floors within this open plan office space preventing the spread of fire through the building whilst providing compartmentation. To avoid a door and lobby at the top or bottom of the stairs for fire separation, a fire curtain was designed in conjunction with the feature spiral staircase. The design of the fire curtain meant that the curtain was concealed within the ceiling making it almost invisible until deployed.



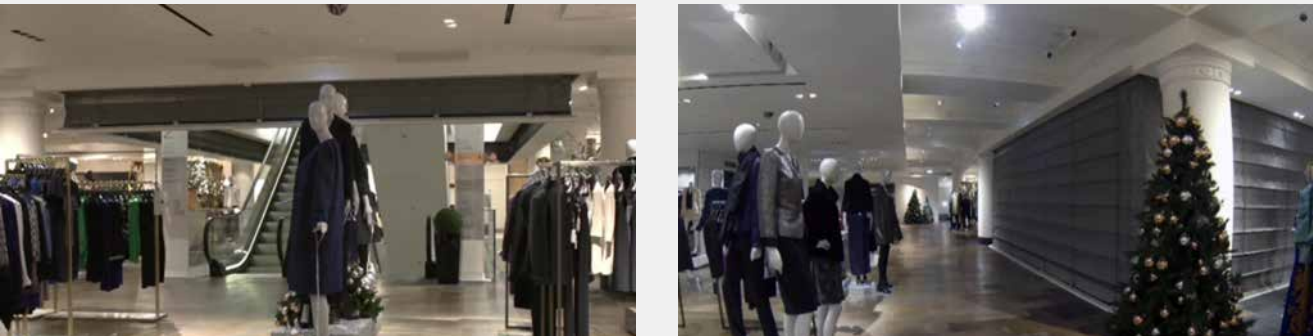
Topshop Store Oxford, UK | 2015
Retail | Compartmentation & Protected Means of Escape

Open, two-sided FireMaster® Concertina fire curtain installed in the new Topshop and Topman store in Oxford, offering a fire break around the escalator between the basement and ground floor. By installing the 5760mm by 3750mm with a drop of 3935mm, L shaped FireMaster Concertina meant it would provide the building with an approved, non-invasive means of fire protection that would satisfy the fire regulations as well as ensuring that the open plan design remained as intended. The complete system is assessed in accordance with BS EN 1634-1:2008 for 240 minutes Integrity.



Google Offices London, UK | 2014
Commercial Offices | Compartmentation and Stairs and Escalators

Closed, rectangular FireMaster® Concertina™ fire curtain installed in Google HQ Offices in London. The headbox was painted bright yellow to match the staircase being protected. In this case, instead of trying to conceal the headbox it was made a feature.



Selfridges London, UK | 2013
Retail | Compartmentation and Stairs and Escalators

Closed, rectangular FireMaster® Concertina™ fire curtain retrofitted in one of London's oldest Department Stores in Selfridges, Oxford Street, London invisibly protecting escalator atrium on three floors. Their shopping floors were structured so that goods could be made more accessible to customers and just over a century later Selfridges is still at the cutting edge of creating greater, more open shopping space for its customers.



People's Choice Credit Union Australia | 2015
Commercial Offices | Compartmentation and Stairs and Escalators

Multiple closed, rectangular FireMaster® Concertina™ fire curtain were installed over several floors. Once activated and fully deployed the Concertina fire curtain replaces the requirement for a lobby or door at both ends of the stairs and protects the occupants from the spread of fire and smoke from one floor to the next.



TAL Fit Out, NSW Australia | 2013
Commercial Offices | Compartmentation and Stairs and Escalators

Open, L and U-shaped FireMaster® Concertina™ fire curtain installed in the TAL offices, known as awarded Australian Life Insurer, helping designers to achieve highly desired open plan office environments without the need for intrusive columns or posts. A ceiling interface panel was designed to match the look and feel of the building to suit the design constraints across 5 floors proving required fire separation from levels 10-14.



Harley Place London, UK | 2015
Domestic Property | Compartmentation and Stairs

Open, L-shaped FireMaster® Concertina™ fire curtain installed in a domestic property in central London. This fire curtain acts as a fire break between the first floor and second floor allowing the designer to remove a door or lobby at the bottom or top of the stairs. FireMaster Concertina product provides occupants with a safe means of escape in the event of a fire.



Hamad Medical Centre Doha, Qatar | 2015
Commercial Offices | Compartmentation

Open, multi-sided FireMaster® Concertina™ fire curtains installed around the reception counters in the Hamad Medical Centre in Doha, Qatar. The building's design configuration was expected to meet fire regulations and used fire curtains to prevent the spread of fire from electrical rooms behind the counters. Coopers L and U-shaped Concertina fire curtains helped to meet these stringent fire regulations without compromising design of this first class healthcare facility.



Bitzer Germany | 2019
Commercial Offices | Compartmentation & Boundary Protection

8 three-sided open FireMaster® Concertina™ fire curtains installed in the new headquarters of a world renowned German company in the technology of refrigeration and air conditioning. The seventeen-storey building was divided up so that two floors were connected with a staircase within the atria on the outer edge of the building. The feature staircase bridges the two floors and to avoid a lobby or doors at the top and or bottom of the staircase, the architects needed to provide a fire curtain solution around the atrium over every other level.



Paya Lebar Singapore | 2019
Commercial Offices | Compartmentation and Stairs

8 closed FireMaster® Concertina™ fire curtains were installed in this state-of-the-art mixed use building in Singapore. The 4 hour rated fire curtains were the largest Concertina fire curtains to date at 31 metres long.



Nova, Victoria London, UK | 2017
Retail & Commercial Offices | Compartmentation

Closed, circular FireMaster® Concertina™ fire curtain installed in a large mixed use building in central London. To avoid a door and lobby at the top or bottom of the stairs for fire separation, a fire curtain was designed in conjunction with the feature spiral staircase. The FireMaster Concertina offers up to four hours fire resistance or heights to 5 metres or two hours for heights to 8 metres.



Dunnhumby London, UK | 2016
Commercial Offices | Compartmentation and Stairs

Open, U-shaped FireMaster® Concertina™ fire curtains installed in the refurbished former Ford Motors warehouse in Hammersmith, West London.



Google Singapore | 2018
Retail & Commercial Offices | Compartmentation and Atrium

Three, irregular shaped Closed FireMaster Concertina fire curtains were installed at Google offices in Singapore. A four, six and eight sided version were installed with the four side version having a large drop of over 8 metres.



Rolling Stock Yard London, UK | 2020
Retail & Commercial Offices | Boundary Protection

An Open FireMaster® Concertina™ fire curtain installed in a large mixed use building in central London. To avoid a post and side guides in the corner of the window, a FireMaster Concertina was installed to fit the shape of the window and drop to prevent the spread of fire to any nearby buildings.

FIREMASTER CONCERTINA EGRESS

MULTI-SIDE ACTIVE FIRE CURTAIN BARRIER ASSEMBLY WITH EGRESS

The FireMaster Concertina Egress features the benefit of an integral egress door allowing the safe evacuation of building occupants or emergency services through the barrier without the need to lift the barrier once deployed. This product can be used as part of a fire engineering solution to protect a building and its occupants from the effects of fire and smoke.

The FireMaster Concertina Egress has been developed to provide a bespoke alternative to fixed non-loadbearing walls and partitions. It can be used in commercial, domestic and industrial applications such as airports, shopping centres, offices and hotels or where the need for maintaining open areas for access is vital.

Available in unlimited widths and shapes, the multi-sided fire curtain removes the requirement for columns or corner posts to suit different building applications.



FIREMASTER CONCERTINA EGRESS IS THE FIRST MULTI-SIDE FIRE CURTAIN TO OFFER AN INTEGRAL EGRESS DOOR

TESTED TO

UL 10D (Fire Tests of Fire Protective Curtain Assemblies)
UL 864 (10th Ed) for Motors and Controls

CERTIFICATION

Complete barrier assemblies are certified by UL, which is an accredited certification body operating to ISO/IEC 17065:2012



PERIOD OF FIRE RESISTANCE

120 minutes endurance (for use in gypsum and masonry wall type constructions) with or without ResQ-Window™

BENEFITS

- **BARRIER EGRESS**
Egress of evacuees or access for emergency services through the barrier
- **ANY POINT OF EGRESS**
Can include multiple egress doors at any exit point
- **STANDARD CONFIGURATION**
Square, Rectangular, L Shaped and Circular FireMaster Open and Closed Concertina products available
- **CUSTOMISED CONFIGURATION**
FireMaster Open and Closed designs can be configured to suit a variety of non-standard shapes and sizes
- **NO COLUMNS AND CORNER POSTS REQUIRED**
No support posts required, the Concertina offers open plan environments

COMPLIANCY AND FEATURES

- FireMaster® Concertina™ Egress active fire curtain barrier assemblies have been tested for fire resistance and self-closing to UL 10D.
- Motors and controls used with the FireMaster® Concertina™ Egress fire curtain barrier have been tested to UL 864 (10th Ed).
- Maximum width of 1000mm egress door
- The egress door can be installed on both the FireMaster Concertina Open and Closed products
- A ResQ-Window™ Vision Panel can be installed into the curtain or egress door if required.
- Can be sign written to indicate point of egress



CONCERTINA™ FIRE AND SMOKE CURTAIN INSTALLATIONS

COOPERS FIREMASTER® AND SMOKESTOP CONCERTINA™ FIRE AND SMOKE CURTAINS ARE INSTALLED IN MANY PROJECTS AROUND THE GLOBE

Coopers Fire have installed fire curtains and smoke barriers in a number of prestigious buildings around the world to help protect the occupants from the harmful effects of smoke and fire.

Coopers are proud of the projects we have worked on and were chosen to install in these prestigious projects as we are recognised as the modern alternative to firewalls, fire doors and glazing.

Fire and smoke curtains give designers the freedom to design modern, open plan spaces without compromising fire safety.



For information, to get a quote
or to book a CPD workshop

Please call:

+44 (0)2392 454 405

or E-mail: info@coopersfire.com

WWW.COOPERSFIRE.COM

Coopers Fire Ltd
Ignis House, Houghton Avenue
Waterlooville, Hampshire
PO7 3DU. United Kingdom

Phone: +44 (0)2392 454 405
Email: info@coopersfire.com
Web: www.coopersfire.com

Coopers Fire Ltd has a policy of
continuous product improvement.

As such we reserve the right to
change design and specifications
without prior notice.

Please check our website for the
latest information.

v04 Dec 2021