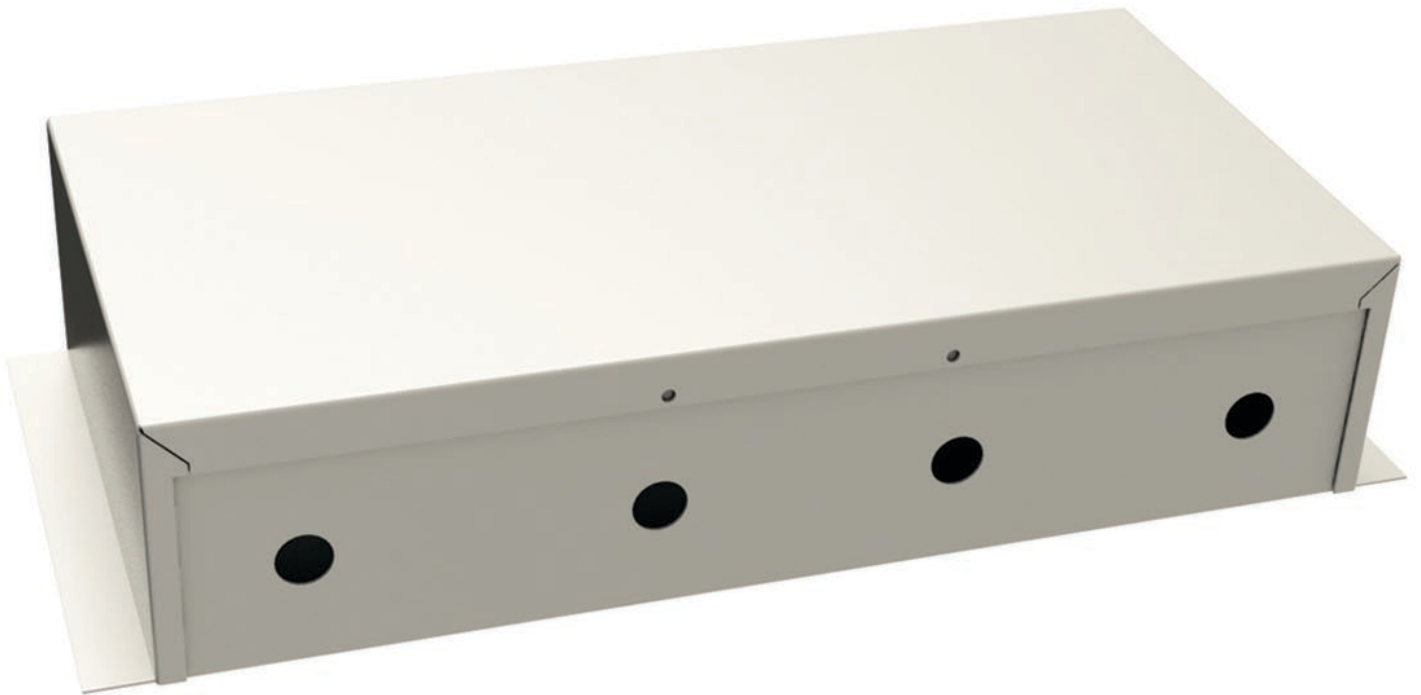


# DATA SHEET – VARIOSPEED®6 MOTOR CONTROL UNIT (VS6-MCU/ER)

PRODUCT CODE:	36005
UNICLASS:	L4231
EPIC:	D25
VERSION:	Issue G - May 2020



# VARIOSPEED®6

## MOTOR CONTROL UNIT (VS6-MCU/ER)

### PRODUCT DESCRIPTION

The Variospeed®6 ERU-CAM system is used for Smoke / Fire curtain(s) fitted with 24Vdc permanent magnet electrical motors fitted with an internal 24Vdc electromagnetic brake, as standard. When the Smoke / Fire curtain(s) are fully retracted, the internal electromagnetic brake is powered, keeping the Smoke / Fire curtain(s) in their retracted position. Power to the motor is completely isolated, prolonging the life of the motor and maintaining manufacturers supply warranty.

The motors include built in short circuit and open circuit protection, meaning the curtains will deploy under gravity failsafe at a descent rate compliant with BS EN 12101 and BS 8524 even if the motor wires are severed, i.e. shorted together or disconnected from the Motor Control Card (MCC).

### OPERATION

In the event of an alarm signal the Smoke / Fire curtain(s) will immediately deploy to their Fire Operational Position (FOP) under Gravity Failsafe.

If there is a mains power failure the Smoke / Fire curtain(s) will be held in the retracted position for 30 minutes under Battery Backup (BBU) before being deployed to their Fire Operational Position (FOP). If an alarm signal is received during a mains power failure, the curtain(s) will deploy immediately to their Fire Operational Position (FOP). The curtain(s) will descend under Total & Controlled GFS (Total Gravity Failsafe).

The Emergency Retract Facility is available during an alarm condition, once the curtains have reached their FOP. The Emergency Retract Facility is also available during a mains failure once the curtain(s) have descended. This can take the form of an Emergency Retract Button or a Fireman's Override. The number of retract operations under mains power failure is limited to the battery power and affected by the size of the curtain(s), number of curtains and any optional extras powered by the ERU-CAM.

The Motor Control Unit MCU/ER controls the Smoke / Fire Curtain motors. The MCU/ER is only used with the Emergency Retract Unit (ERU-CAM) which provides both the 24V DC operating power and the alarm status signal. The MCU/ER does not require a local mains power supply.

A Motor Control Unit (MCU/ER) is required for each motor. The Variospeed®6 C/11W/ER or C/30R/ER motors are supplied with FP200 fire rated cable (or equivalent).

Where the emergency retract facility is required by the fire engineered design (by others) the MCU/ER should not be located in a position which will be subjected to a fire / heat load greater than that experienced safely by an occupant eg. at a level lower than a ceiling height, or a smoke layer depth or in a protected cupboard. This will enable the MCU/ER to function as designed.

Wiring from the ERU-CAM to the MCU/ER should be a minimum FP200 fire rated or equivalent. Emergency retract buttons should be placed between 900 – 1200 mm above finished floor level as required by BS 8524 and also wired with FP200 fire rated or equivalent cable. Consideration should be given to the type of emergency retract button bearing in mind the site and / or application.

# VARIOSPEED<sup>®</sup>6

## MOTOR CONTROL UNIT (VS6-MCU/ER)

### SPECIFICATION

#### Inputs:

DC Supply from ERU CAM

DC 'Slave line' from additional Motor Control Unit(s) (MCU/30R)\*

#### Outputs:

24Vdc to the motor

DC 'Slave line' from additional Motor Control Unit(s) (MCU/30R)\*

#### Material:

Mild Steel

#### Finish:

RAL 7035 (Light Grey)

#### Dimensions (mm):

340(h) x 200(w) x 70(d)

#### Weight (Kg):

2.7Kg

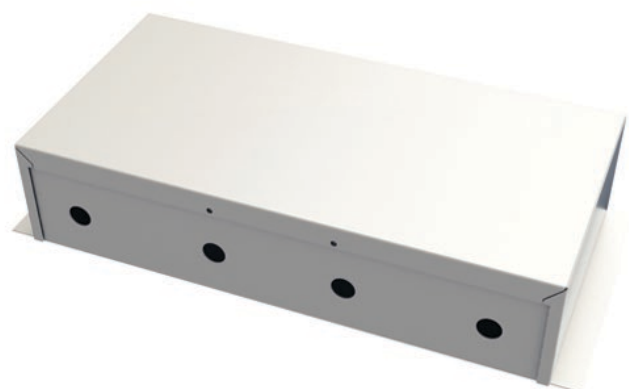
#### Temperature Range:

0°C to +50°C

#### Location:

Internal

\*Conjoined smoke / fire curtain units only.



Coopers Fire Ltd  
Ignis House,  
Houghton Avenue,  
Waterlooville, Hampshire  
PO7 3DU.  
United Kingdom

Coopers Fire Ltd has a policy of continuous product improvement. As such we reserve the right to change design and specifications without prior notice.

**Phone:** +44 (0)2392 454 405  
**Email:** [info@coopersfire.com](mailto:info@coopersfire.com)  
**Web:** [www.coopersfire.com](http://www.coopersfire.com)

Please check our website for the latest information

© Coopers Fire Ltd. All content and products are copyright of Coopers Fire Ltd. Registered in England Number: 2010274. Multiple patents granted and pending.