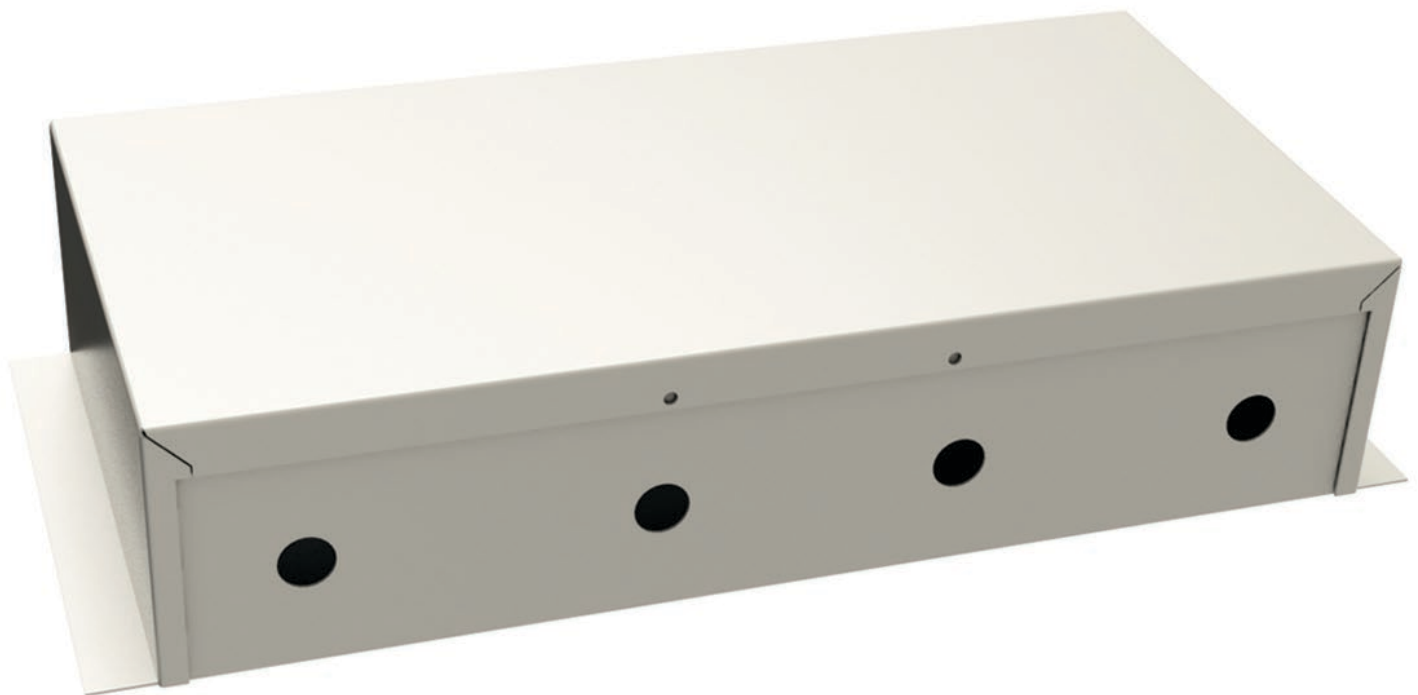


DATASHEET – VARIOSPEED®6 MOTOR CONTROL UNIT 30R (VS6-MCU/30R)

PRODUCT CODE:	36002
UNICLASS:	L4231
EPIC:	D25
VERSION:	Issue H - May 2020



VARIOSPEED® 6 MOTOR CONTROL UNIT 30R (VS6-MCU/30R)

PRODUCT DESCRIPTION

The Variospeed®6 BBU-CAM and MCU system is used for Smoke / Fire Curtain(s) fitted with 24Vdc permanent magnet electrical motors fitted with an internal 24Vdc electromagnetic brake, as standard. When the Smoke / Fire curtain(s) are fully retracted, the internal electromagnetic brake is powered, keeping the Smoke / Fire curtain(s) in their retracted position. Power to the motor is completely isolated, prolonging the life of the motor and maintaining manufacturers supply warranty.

The motors include built in short circuit and open circuit protection, meaning the curtains will deploy under total controlled gravity failsafe at a descent rate compliant with BS EN 12101 and BS 8524 even if the motor wires are severed, i.e. shorted together or disconnected from the Motor Control Card (MCC).

OPERATION

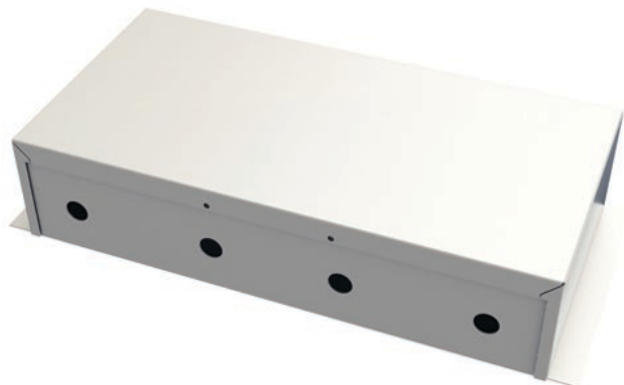
In the event of an alarm activation the electromagnetic brake will de-energise and the Smoke / Fire curtain(s) will immediately deploy to their Fire Operational Position (FOP) under Gravity Failsafe.

If there is a mains power failure the Smoke / Fire curtain(s) will be held in the retracted position for 30 minutes under Battery Backup (BBU) before deploying to their Fire Operational Position (FOP). If an alarm activation is received during a mains power failure, the curtain(s) will immediately deploy to their Fire Operational Position (FOP). The Smoke / Fire curtain(s) will descend under total & controlled GFS (Gravity Failsafe).

A Motor Control Unit MCU/30R can be used to control each Smoke/Fire curtain motor when using the BBU CAM system. The MCU/30R is fitted with an 120VA transformer.

A single Motor Control Unit (MCU) is required for a single motor.

The MCU/30R is for use with the Variospeed®6 C/30W/S or C/130W/F motor range.



SPECIFICATION

Power Input:

230Vac 50Hz dedicated supply

Power Rating (Maximum):
MCU/30R 120 Watts

Weight
3.7kg

Power Consumption (Normal):
MCU/30R 6 Watts

Other Inputs:

DC 'Slave line' from additional Motor Control Unit(s) (MCU/30R)*

Outputs:

24Vdc to the motor

DC 'Slave line' from additional Motor Control Unit(s) (MCU/30R)*

Material:
Mild Steel

Finish:
RAL 7035 (Light Grey)

Dimensions (mm):
340(h) x 200(w) x 70(d)

Temperature Range:
0°C to +50°C

Location:
Internal

IP Rating:
IP 40 standard
IP 55 on request**

*Conjoined smoke / fire curtain units only.

** IP 55 version has different appearance and dimensions are:
300(h) x 200(w) x 120(d)

*** IP 55 version fitted with BMS interface relays:
300(h) x 300(w) x 120(d)

Coopers Fire Ltd
Ignis House,
Houghton Avenue,
Waterlooville, Hampshire
PO7 3DU.
United Kingdom

Coopers Fire Ltd has a policy of continuous product improvement. As such we reserve the right to change design and specifications without prior notice.

Phone: +44 (0)2392 454 405
Email: info@coopersfire.com
Web: www.coopersfire.com

Please check our website for the latest information