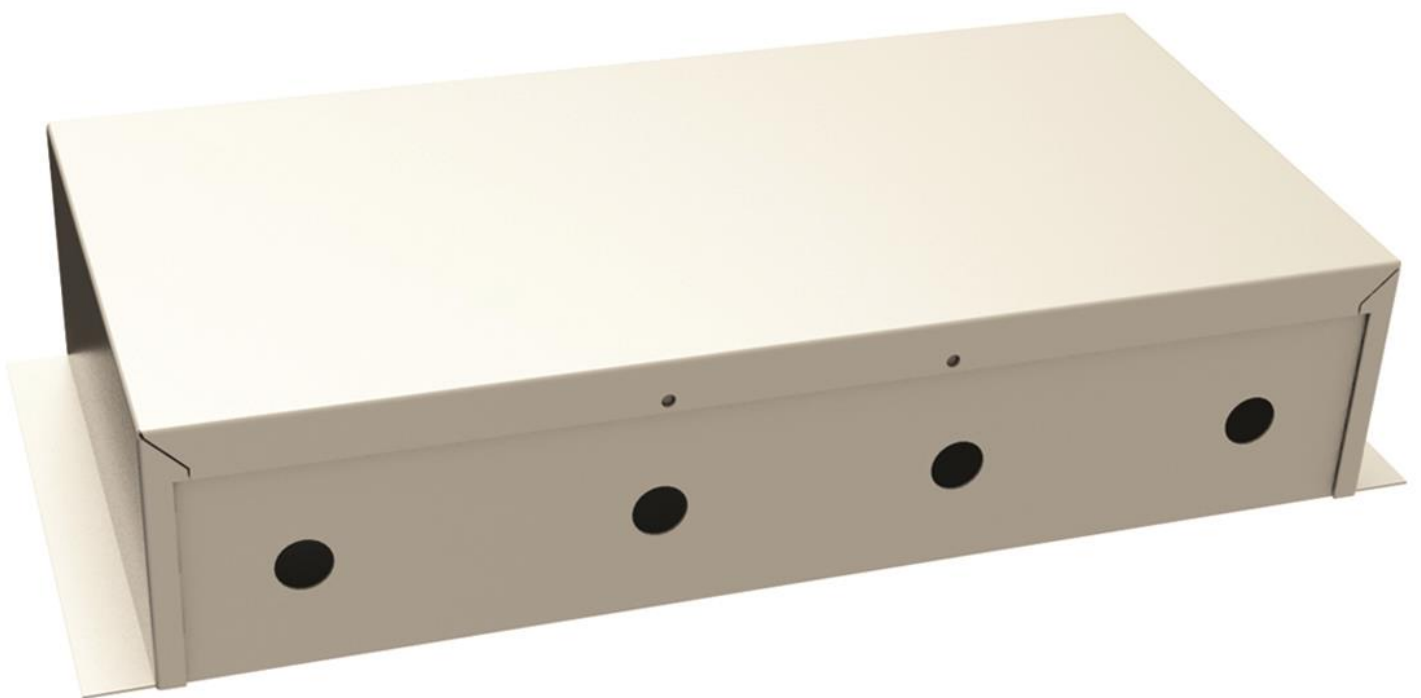


DATA SHEET – VARIOSPEED®6 MOTOR CONTROL UNIT (VS6-UL-MCU/ER)

PRODUCT CODE: 56076

VERSION: Issue A – May 2017



VARIOSPEED®6 MOTOR CONTROL UNIT (VS6-UL-MCU/ER)

PRODUCT DESCRIPTION

The UL Variospeed®6 ERU-CAM is used in conjunction with the Variospeed®6 Motor Control Unit (VS6-UL-MCU/ER) and is used for Smoke / Fire Curtain(s) fitted with 24Vdc permanent magnet electrical motors fitted with an internal 24Vdc electromagnetic brake, as standard. When the Smoke / Fire curtain(s) are fully retracted, the internal electromagnetic brake is powered, keeping the Smoke / Fire curtain(s) in their retracted position. Power to the motor is completely isolated.

OPERATION

In the event of an alarm signal the Smoke / Fire curtain(s) will immediately deploy to their Fire Operational Position (FOP) under Gravity Failsafe.

If there is a mains power failure the Smoke / Fire curtain(s) will be held in the retracted position under Battery Backup (BBU) before being deployed to their Fire Operational Position (FOP). If an alarm signal is received during a mains power failure, the curtain(s) will deploy immediately to their Fire Operational Position (FOP). The curtain(s) will descend under Total & Controlled GFS (Total Gravity Failsafe).

The Emergency Retract Facility is available during an alarm condition, once the curtains have reached their FOP. The Emergency Retract Facility is also available during a mains failure once the curtain(s) have descended. This can take the form of an Emergency Retract Button. The number of retract operations under mains power failure is limited to the battery power and affected by the size of the curtain(s), number of curtains and any optional extras powered by the VS6-UL-ERU-CAM.

The Motor Control Unit VS6-UL-MCU/ER controls the Smoke / Fire Curtain motors.

A Motor Control Unit (VS6-UL-MCU/ER) is required for each motor.

Emergency retract buttons should be placed between 900 – 1200 mm above finished floor level. Consideration should be given to the type of emergency retract button bearing in mind the site and / or application.

SPECIFICATION

Inputs:

DC Supply from UL-VS6-ERU-CAM

Outputs:

24Vdc to the motor

DC 'Slave line' to additional Motor Control Unit(s) (UL-VS6-MCU/ER)

Material:

Mild Steel

Finish:

RAL 7035 (Light Grey)

Dimensions (mm):

340(h) x 200(w) x 70(d)

Weight (Kg):

2.7Kg

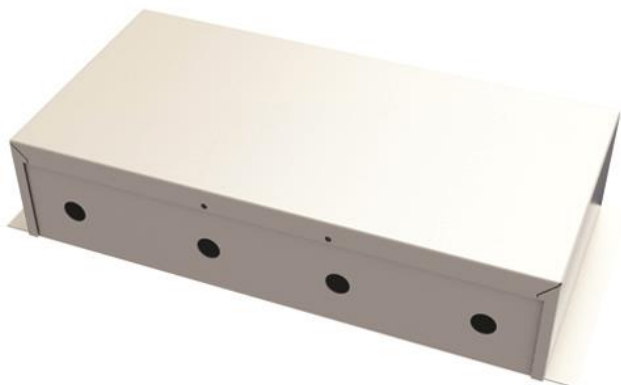
Temperature Range:

0°C to +50°C

Location:

Internal

*Conjoined smoke / fire curtain units only.



Coopers Fire Ltd,
Edward House, Penner Road,
Havant, Hampshire, PO9 1QZ
United Kingdom

Phone: +44 (0)2392 454 405

Fax: +44 (0)2392 492 732

Email: info@coopersfire.com

Web: www.coopersfire.com

Coopers Fire Ltd has a policy of continuous product improvement.

As such we reserve the right to change design and specifications without prior notice.

Please check our website for the latest information