

**Subject:** FireMaster® ResQ-Window™ Curtains – BS EN 1634-1 maximum sizes and installations locations

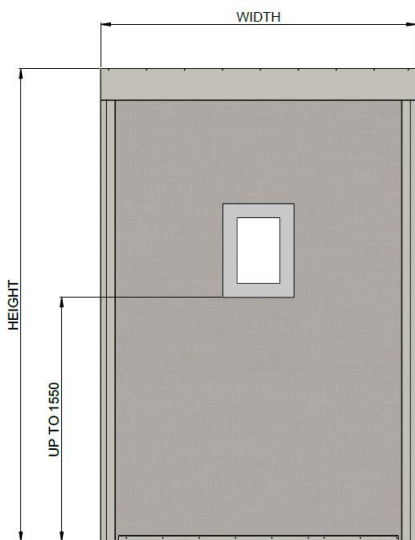
Maximum Sizes:

Please note the ResQ Window is only available on single roller fire curtains and not available on overlapping fire curtains.

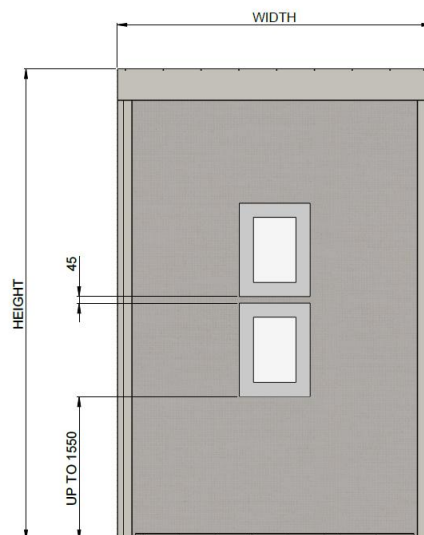
Drop (m)	Width of FireMaster A1 Fire Curtain (m)															
	1	2	3	4	5	5.1	5.2	5.3	5.4	5.5	5.6	5.7	5.8	5.9	6	
1	✓	✓	✓	✓	✓	✓	✓	✓	✓	✓	✓	✓	✓	✓	✓	✓
2	✓	✓	✓	✓	✓	✓	✓	✓	✓	✓	✓	✓	✓	✓	✓	✓
3	✓	✓	✓	✓	✓	✓	✓	✓	✓	✓	✓	✓	✓	✓	✓	✓
4	✓	✓	✓	✓	✓	✓	✓	✓	✓	✓	✓	✓	✓	✓	✓	✓
5	✓	✓	✓	✓	✓	✓	✓	✓	✓	✓	✓	✓	✓	✓	✓	✓
6	✓	✓	✓	✓	✓	✓	✓	✓	✓							
7	✓	✓	✓	✓	✓	✓	✓	✓								
8	✓	✓	✓	✓	✓											

**Curtain Configuration:**

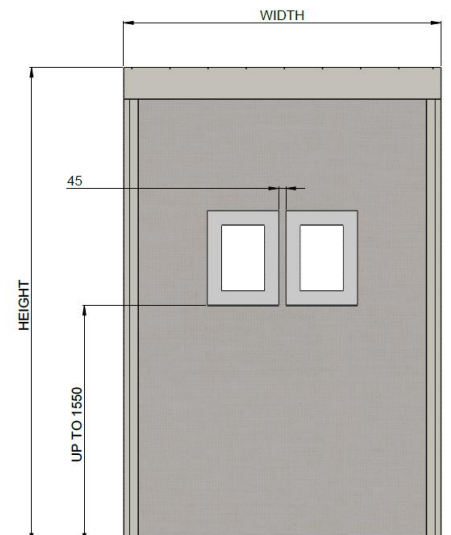
Refer to the drawing below for the installation locations of the ResQ-Windows.



Option 1 – 1 Window



Option 2 – 2 Window's



Option 3 – 2 Window's