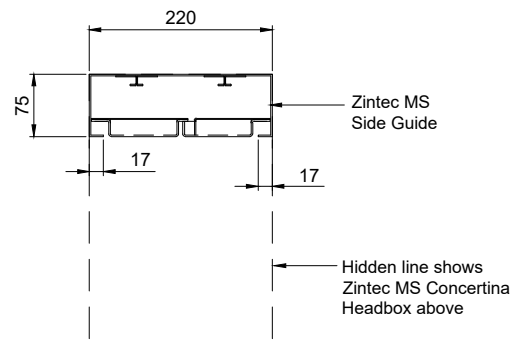
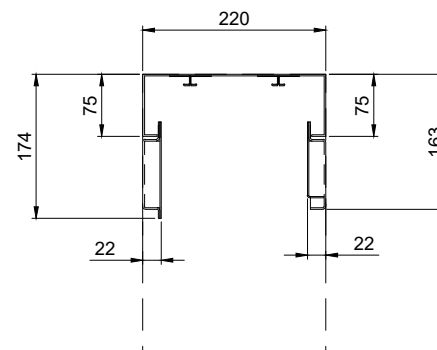


HEADBOX DETAIL

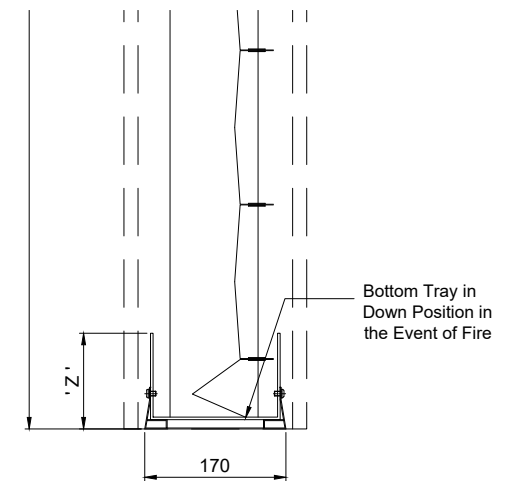


DOOR CLOSED

\* DOOR MAX. HEIGHT = 3M



DOOR OPENED



BOTTOM TRAY DETAIL  
SECTION A

NOTE: - Number of motor(s) and location depends on curtain overall dimension  
- Headbox size should allow additional 15mm for fixings bolt head

| HEADBOX SIZE |        | Z (mm) | CURTAIN DIMENSION |      |            |
|--------------|--------|--------|-------------------|------|------------|
| X (mm)       | Y (mm) |        | L - WIDTH         | DROP | ANGLE      |
| 220          | 275    | 115    | Unlimited         | < 3m | 45° - 180° |
| 220          | 340    | 180    | Unlimited         | < 5m | 45° - 180° |



**coopers**  
Coopers Fire Limited

Ignis House, Houghton Avenue  
Waterlooville, Hampshire  
PO7 3DU, UK

Tel: +44 (0)2392 454 405

Email: [info@coopersfire.com](mailto:info@coopersfire.com)  
Web: [www.coopersfire.com](http://www.coopersfire.com)

|           |    |   |  |
|-----------|----|---|--|
| DRAWN:    | ML | TITLE: Open FireMaster® Concertina™ with<br>Side Guide Door Typical Arrangement - Compact Box   |  |
| CHECKED:  | JR | © COOPERS FIRE LIMITED<br>ALL RIGHTS RESERVED. THIS DESIGN MAY NOT BE REPRODUCED<br>IN ANY MATERIAL FORM, INCLUDING ELECTRONICALLY WITHOUT<br>THE WRITTEN PERMISSION OF THE COPYRIGHT NAMES | ALL DIMENSIONS IN MILLIMETRES<br>UNLESS OTHERWISE STATED |
| APPROVED: | JR | DRG. No. 604/014/MK   | ISSUE: 2<br>DATE: 14.12.2020                             |