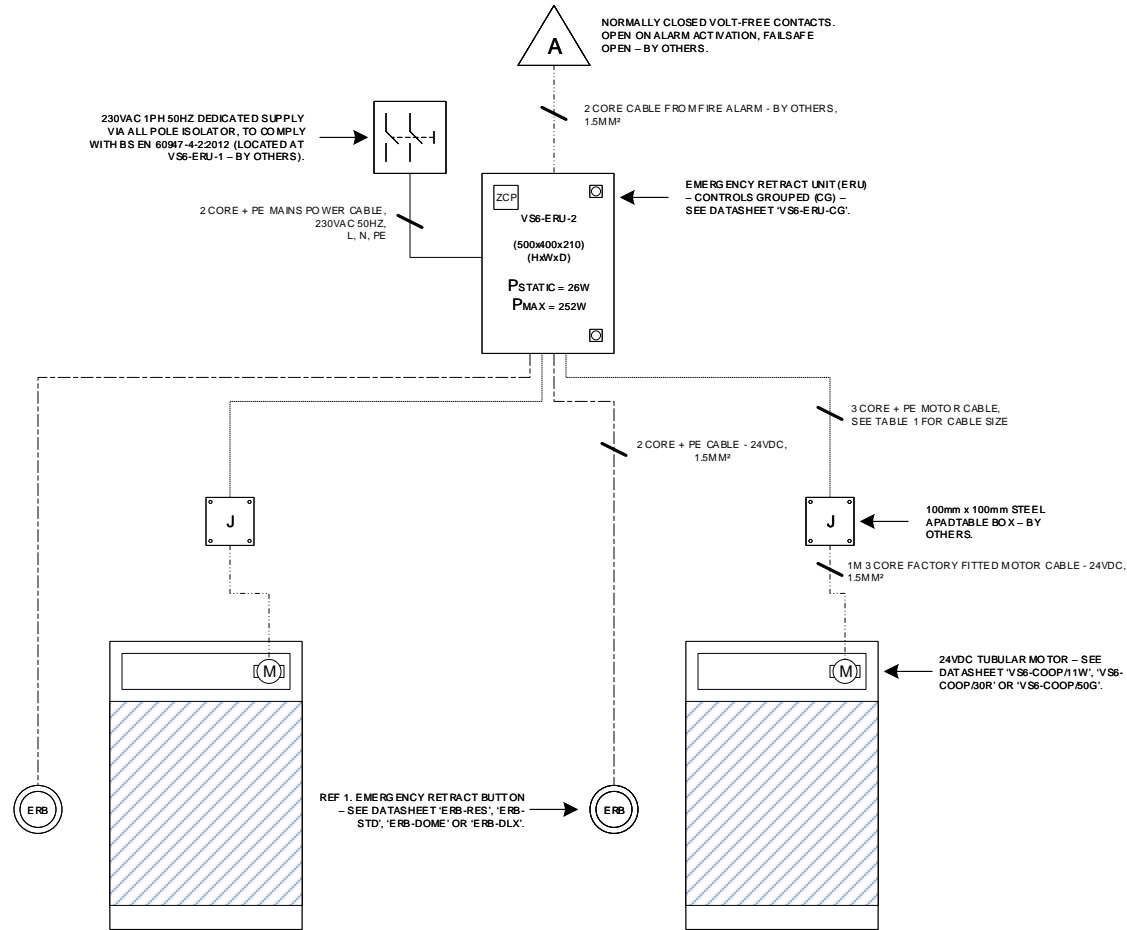


**V56-ERU-2 FEATURES:**

- TRUE GRAVITY FAILSAFE SYSTEM.
- PROVIDES BATTERY BACKUP.
- CAN BE CONFIGURED FOR MULTIPLE ALARM INPUTS/OUTPUTS.
- CAN BE CONFIGURED FOR LOCAL DETECT OR ACTIVATION - SEE DATASHEETS 'V56-HEAT DETECTOR' OR 'V56-SMOKE DETECTOR'.
- CAN CONNECT TO BMS SYSTEMS TO PROVIDES STATUS OUTPUTS FOR CURTAIN UP, CURTAIN DOWN, CURTAIN FAULT AND SYSTEM FAULT.
- CAN BE CONFIGURED FOR SPUT DROP DELAY/MULTI-STAGE DEPLOYMENT.
- CAN BE CONFIGURED FOR SOFT ASCENT/SLOW FINAL OPENING SPEED.
- CAN PROVIDE OBSTRUCTION DETECTION SENSORS - SEE DATASHEETS 'V56-OWS-R', 'V56-OWS-C', 'V56-OWS-3' OR 'V56-OLC'.
- CAN PROVIDE AUDIO WARNING SYSTEMS - SEE DATASHEETS 'V56-VWR' OR 'V56-VWC'.
- CAN PROVIDE VISUAL WARNING SYSTEMS - SEE DATASHEETS 'V56-LWR' OR 'V56-LWC'.
- CAN PROVIDE EMERGENCY RETRACT FUNCTION - SEE REF 1.
- HAS ON-BOARD DESCENT SPEED ADJUSTMENT.
- INTERCONNECTING COMMUNICATION 'SLAVE' WIRING FOR CONJOINED/OVERLAPPING FIRE/SMOKE CURTAINS.



**FIELD WIRING TO BE FIRE RATED IN ACCORDANCE WITH BS8519**

**coopers**  
Coopers Fire Limited

Ignis House, Houghton Avenue,  
Waterlooville, Hampshire,  
PO7 3DU, UK

Tel: +44 (0) 23 9245 4405  
Fax: +44 (0) 23 9249 2732

Email: info@coopersfire.com  
Web: www.coopersfire.com

DRAWN	MA	TITLE	VARIOSPEED® 6 ERU-2 TYPICAL WIRING DIAGRAM		
CHECKED	RW	© 1997 - 2020 COOPERS FIRE LIMITED ALL RIGHTS RESERVED. THIS DESIGN MAY NOT BE REPRODUCED IN ANY MATERIAL FORM, INCLUDING ELECTRONICALLY WITHOUT THE WRITTEN PERMISSION OF THE COPYRIGHT NAMES.		ALL DIMENSIONS IN MILLIMETERS UNLESS OTHERWISE STATED	
APPROVED	JR	DRAWING NO	32003	ISSUE	A
				DATE	22 Jul 2020

**TABLE 1**

MOTOR CABLE EXTENSION		
CABLE SIZE	MOTOR MODEL	
	11W	30R
1.5MM <sup>2</sup>	35M	25M
2.5MM <sup>2</sup>	58M	42M
4MM <sup>2</sup>	93M	67M
6MM <sup>2</sup>	139M	100M