

VS6-BBU-2 FEATURES:

- TRUE GRAVITY FALLSAFE SYSTEM.
- PROVIDES BATTERY BACKUP.
- CAN BE CONFIGURED FOR MULTIPLE ALARM INPUTS/OUTPUTS.
- CAN CONNECT TO BMS SYSTEMS TO PROVIDE STATUS OUTPUTS FOR CURTAIN UP, CURTAIN DOWN, CURTAIN FAULT AND SYSTEM FAULT. SEE DATASHEETS - 'VS6-BMS03' AND 'VS6-PZLE'.
- CAN BE CONFIGURED FOR SPLIT DROP DELAY/MULTI-STAGE DEPLOYMENT.
- CAN BE CONFIGURED FOR SOFT ASCENT/SLOW FINAL OPENING SPEED.
- HAS ON-BOARD DESCENT SPEED ADJUSTMENT.
- INTERCONNECTING COMMUNICATIONS 'SLAVE' WIRING FOR CONJOINED/OVERLAPPING FIRE/SMOKE CURTAINS.

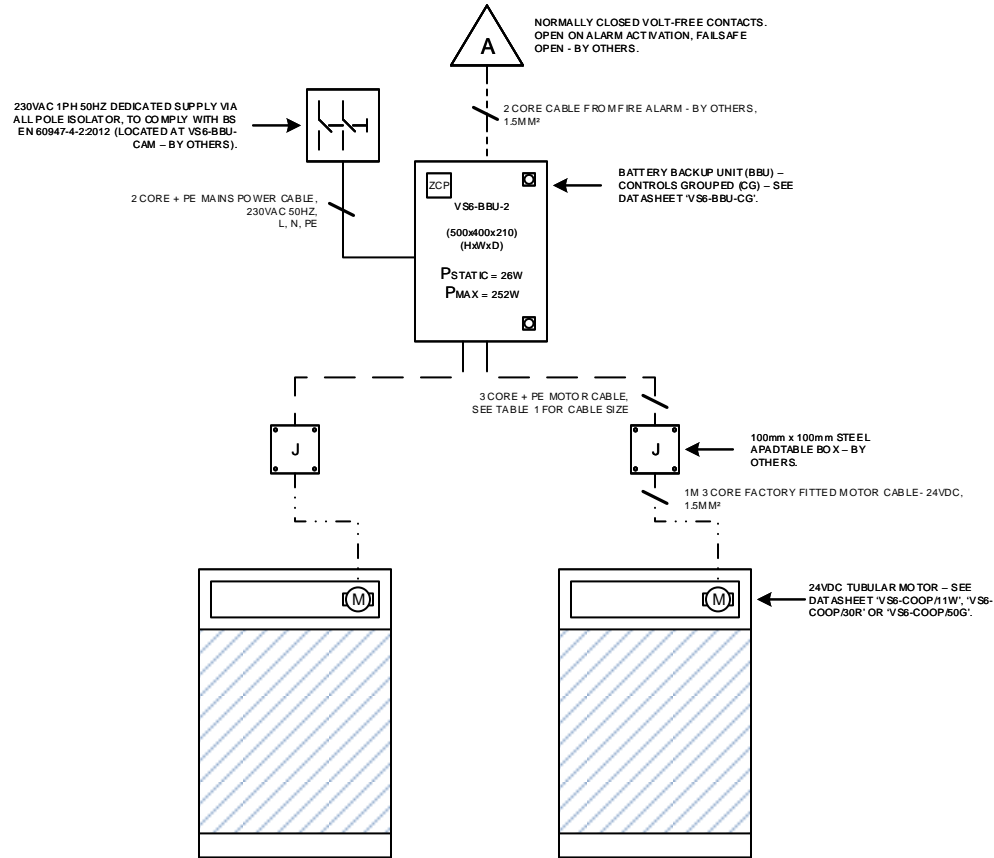


TABLE 1

MOTOR CABLE EXTENSION		
CABLE SIZE	MOTOR MODEL	
	11W	30R
1.5MM ²	35M	25M
2.5MM ²	58M	42M
4MM ²	93M	67M
6MM ²	139M	100M

Edward House, Penner Road,
Havant, Hampshire, PO9 1QZ,
UK

coopers
Coopers Fire Limited

Tel: +44 (0) 23 9245 4405
Fax: +44 (0) 23 9249 2732

Email: info@coopersfire.com
Web: www.coopersfire.com

DRAWN	MA	TITLE	VARIOSPEED® 6 BBU-2 TYPICAL WIRING DIAGRAM		
CHECKED	RW	© 1997 - 2017 A COOPER GROUP LIMITED ALL RIGHTS RESERVED. THIS DESIGN MAY NOT BE REPRODUCED IN ANY MATERIAL FORM, INCLUDING ELECTRONICALLY WITHOUT THE WRITTEN PERMISSION OF THE COPYRIGHT NAMES.		ALL DIMENSIONS IN MILLIMETERS UNLESS OTHERWISE STATED	
APPROVED	JR	DRAWING NO	31003	ISSUE	A
				DATE	4 Sep 2017