

VS6-BBU-1 FEATURES:

- TRUE GRAVITY FALLSAFE SYSTEM.
- PROVIDES BATTERY BACKUP.
- CAN BE CONFIGURED FOR MULTIPLE ALARM INPUTS/OUTPUTS.
- CAN CONNECT TO BMS SYSTEMS TO PROVIDE STATUS OUTPUTS FOR CURTAIN UP, CURTAIN DOWN, CURTAIN FAULT AND SYSTEM FAULT. SEE DATASHEETS – 'VS6-BMS03' AND 'VS6-PZLE'.
- CAN BE CONFIGURED FOR SPLIT DROP DELAY/MULTI-STAGE DEPLOYMENT.
- CAN BE CONFIGURED FOR SOFT ASCENT/SLOW FINAL OPENING SPEED.
- HAS ON-BOARD DESCENT SPEED ADJUSTMENT.
- INTERCONNECTING COMMUNICATIONS 'SLAVE' WIRING FOR CONJOINED/OVERLAPPING FIRE/SMOKE CURTAINS.

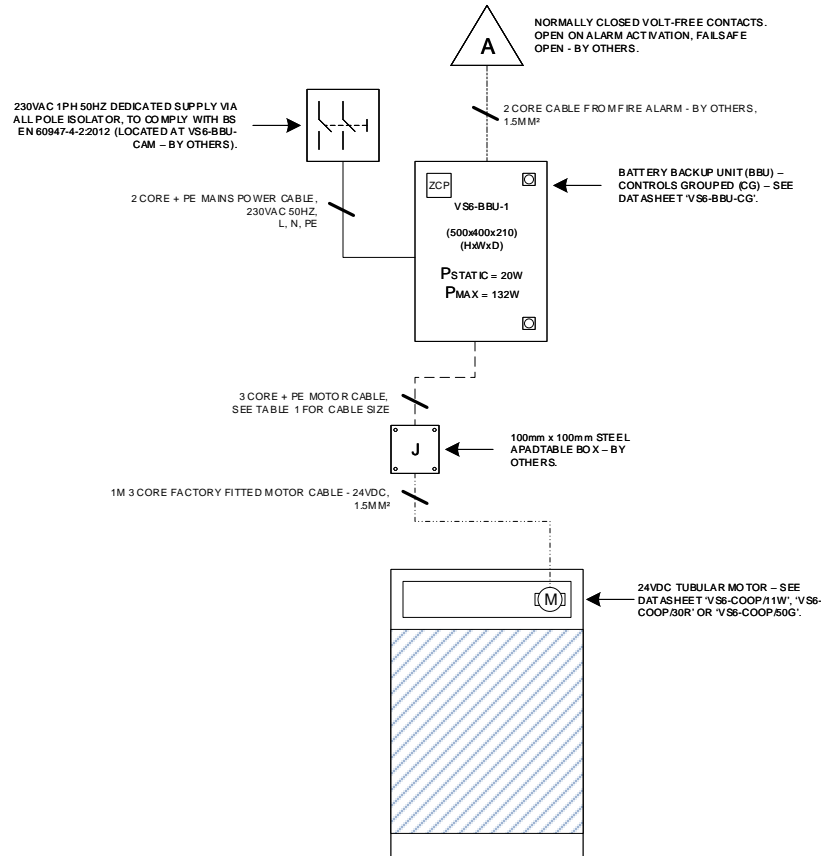


TABLE 1

MOTOR CABLE EXTENSION		
CABLE SIZE	MOTOR MODEL	
	11W	30R
1.5MM ²	35M	25M
2.5MM ²	58M	42M
4MM ²	93M	67M
6MM ²	139M	100M



 Ignis House, Houghton Avenue,
 Waterlooville, Hampshire,
 PO7 3DU, UK
 Tel: +44 (0) 23 9245 4405
 Fax: +44 (0) 23 9249 2732
 Email: info@coopersfire.com
 Web: www.coopersfire.com

DRAWN	MA	TITLE	VARIOSPEED® 6 BBU-1 TYPICAL WIRING DIAGRAM			
CHECKED	RW	© 1997 - 2020 COOPERS FIRE LIMITED ALL RIGHTS RESERVED. THIS DESIGN MAY NOT BE REPRODUCED IN ANY MATERIAL FORM, INCLUDING ELECTRONICALLY WITHOUT THE WRITTEN PERMISSION OF THE COPYRIGHT NAMES.		ALL DIMENSIONS IN MILLIMETERS UNLESS OTHERWISE STATED		
APPROVED	JR	DRAWING NO	31002	ISSUE	A	
				DATE	22 Jul 2020	