

DATASHEET – VARIOSPEED®6 BATTERY BACKUP UNIT – CONTROLS AT MOTOR – DOUBLE ZONE (VS6-BBU-CAM-DZ)

PRODUCT CODE: 35028

UNICLASS: L4231

EPIC: D25

VERSION: Issue L - May 2020



VARIOSPEED®6 BATTERY BACKUP UNIT – CONTROLS AT MOTOR – DOUBLE ZONE (VS6-BBU-CAM-DZ)

PRODUCT DESCRIPTION

The Variospeed®6 BBU-CAM is used in conjunction with the Variospeed®6 Motor Control Unit (MCU) and is used for Smoke/Fire Curtain(s) fitted with 24Vdc permanent magnet electrical motors fitted with an internal 24Vdc electromagnetic brake, as standard. When the Smoke/Fire curtain(s) are fully retracted, the internal electromagnetic brake is powered, keeping the Smoke/Fire curtain(s) in their retracted position. Power to the motor is completely isolated, prolonging the life of the motor and maintaining manufacturers supply warranty.

The motors include built in short circuit and open circuit protection, meaning the curtains will deploy under total controlled gravity failsafe at a descent rate compliant with BS EN 12101 and BS 8524 even if the motor wires are severed, i.e. shorted together or disconnected from the Motor Control Card (MCC).

OPERATION

In the event of an alarm activation the electromagnetic brake will de-energise and the Smoke/Fire curtain(s) will immediately deploy to their Fire Operational Position (FOP) under Gravity Failsafe.

If there is a mains power failure the Smoke/Fire curtain(s) will be held in the retracted position for 30 minutes under Battery Backup (BBU) before being deployed to their Fire Operational Position (FOP). If an alarm signal is received during a mains power failure, the curtain(s) will deploy immediately to their Fire Operational Position (FOP). The curtain(s) will descend under Total & Controlled GFS (Total Gravity Failsafe).

The BBU-CAM-DZ is capable of controlling multiple Smoke/Fire Curtains in two independent zones.

The BBU-CAM-DZ can control up to 20 Smoke/Fire Curtains per zone, where the MCU/11W or 30R is local/close to the motor. The Battery Back-Up facility is provided by two 12V 7Ah batteries, which are constantly charged by the BBU-CAM-DZ.

SPECIFICATION

Power Input:

230Vac 50Hz dedicated supply

Power Rating (Maximum):

30W

Alarm Input:

Normally closed contact from fire alarm.
Open on alarm activation. 1 alarm contact required per zone.

Outputs:

24Vdc to the Motor Control Unit
(MCU/11W or 30R)

Material:

Mild Steel

Finish:

RAL 7035 (Light Grey)

Dimensions (mm):

500(h) x 400(w) x 210(d)

Weight:

15.2kg

IP Rating:

IP55

Temperature Range:

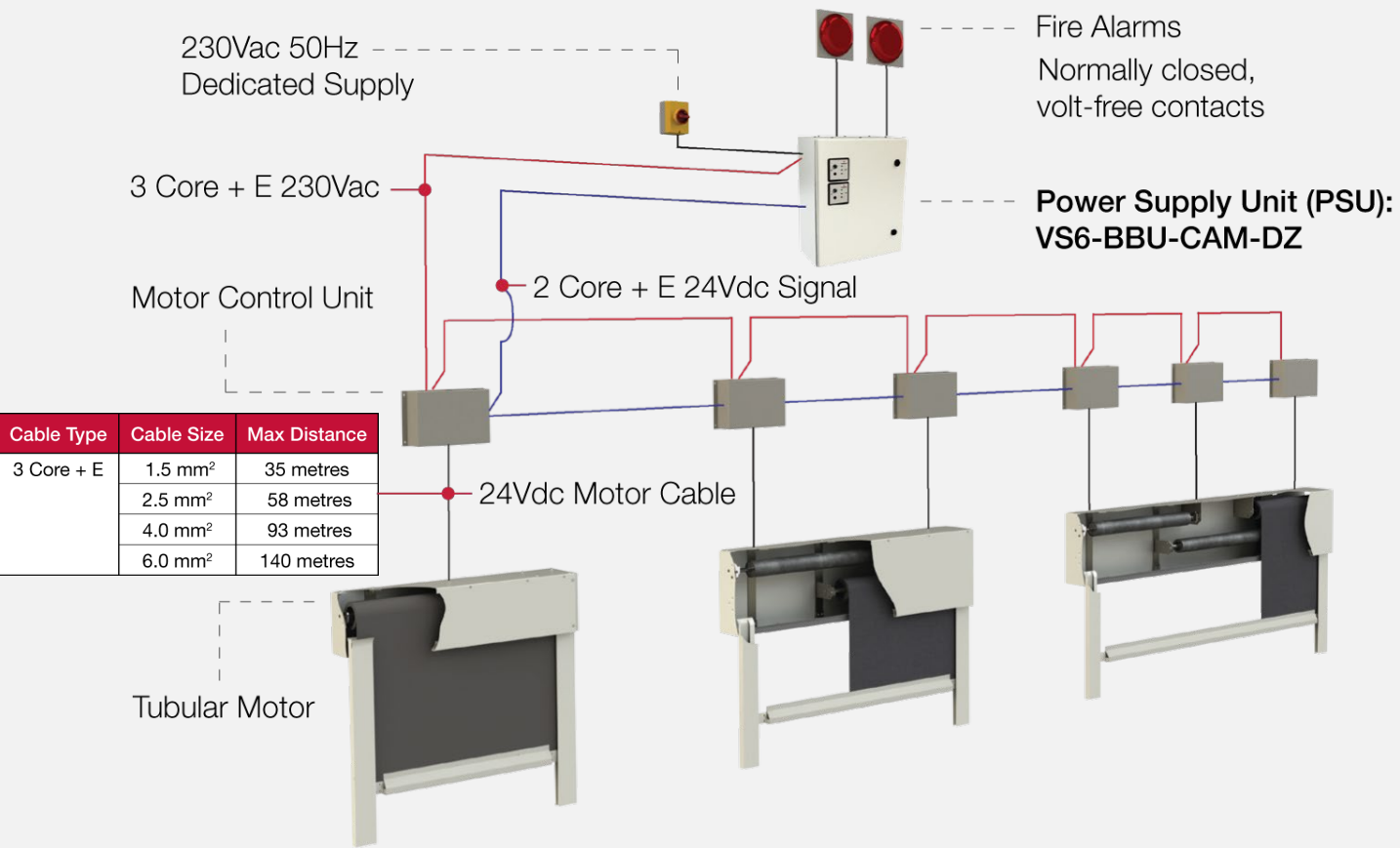
0°C to +50°C

Location:

Internal

VARIOSPEED®6 BATTERY BACKUP UNIT – CONTROLS AT MOTOR – DOUBLE ZONE (VS6-BBU-CAM-DZ)

VARIOSPEED®6 CONTROLS AT MOTOR (CAM) –
TYPICAL WIRING LAYOUT

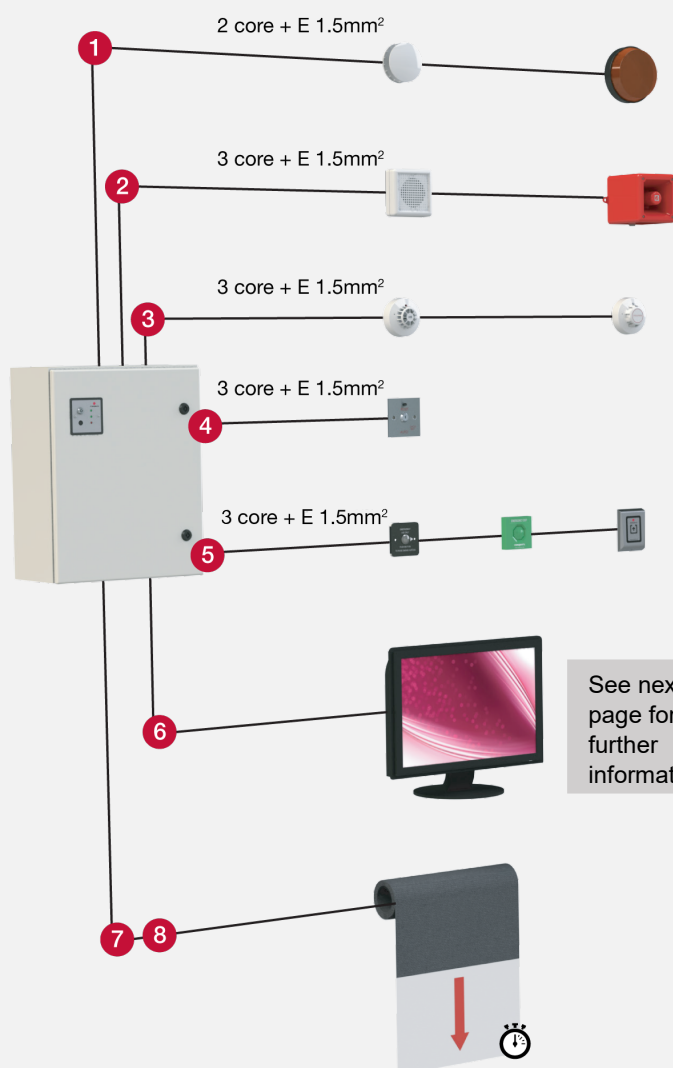


*A maximum 20 motors can be controlled from 1 x VS6-BBU-CAM-DZ

VARIOSPEED®6 BATTERY BACKUP UNIT – CONTROLS AT MOTOR – DOUBLE ZONE (VS6-BBU-CAM-DZ)

CONTROLS – OPTIONAL EXTRAS MATRIX

See the table below for use of optional extras available.



Optional Extras		Control Panel Type	
		ERU / MONO	BBU
1	Light Warning Unit	✓	✓
2	Voice Warning Unit	✓	✓
3	Heat Detector Smoke Detector	✓	✗
4	Test / Reset Switch	✓	✓
5	Emergency Retract Push Buttons	✓	✗
6	Building Management System (BMS) Interface (see next page for more information)	✓	✓
7	Adjustable Split Drop and Half Drop Enabled	✓	✗
8	Safety Edge / Bump Stop	✓	✗

ERU - Emergency Retract Unit

MONO – Control Panel for single curtain i.e. one roller

BBU – Battery Backup Unit

Datasheet Optional Extras Reference

Visit Coopers Fire website at www.coopersfire.com

VARIOSPEED®6 BATTERY BACKUP UNIT – CONTROLS AT MOTOR – DOUBLE ZONE (VS6-BBU-CAM-DZ)

BUILDING MANAGEMENT SYSTEM (BMS) OPTIONS

See the table below for guidance on the correct BMS components required for Coopers Fire Variospeed®6 controllers.

Control System Name	BMS Description	Component/ Stock Number	Note	BMS Outputs				
				Control Panel Fault (Mains power & alarm)	Curtain Up	Curtain Down	Curtain Fault	Battery low charge, battery fault, battery disconnected
Variospeed®6	Standard BMS	PZUE PCB 30074	1 x PZUE PCB per BBU/ERU	✓	✗	✗	✗	✗
	Curtain Status BMS	BMS03 Kit 30093	1 x BMS03 Kit per curtain	✗	✓	✓	✓	✗
	Battery Monitoring BMS	SLAM PCB 34105	1 x SLAM PCB per BBU/ERU	✗	✗	✗	✗	✓
	Full BMS	PZUE PCB 30074 BMS03 Kit 30093 SLAM PCB 34105	1 x PZUE PCB per BBU/ERU 1 x BMS03 Kit per curtain 1 x SLAM PCB per BBU/ERU	✓	✓	✓	✓	✓



Coopers Fire Ltd
Ignis House,
Houghton Avenue,
Waterlooville, Hampshire
PO7 3DU.
United Kingdom

Coopers Fire Ltd has a policy of continuous product improvement. As such we reserve the right to change design and specifications without prior notice.

Phone: +44 (0)2392 454 405
Email: info@coopersfire.com
Web: www.coopersfire.com

Please check our website for the latest information

© Coopers Fire Ltd. All content and products are copyright of Coopers Fire Ltd. Registered in England Number: 2010274. Multiple patents granted and pending.