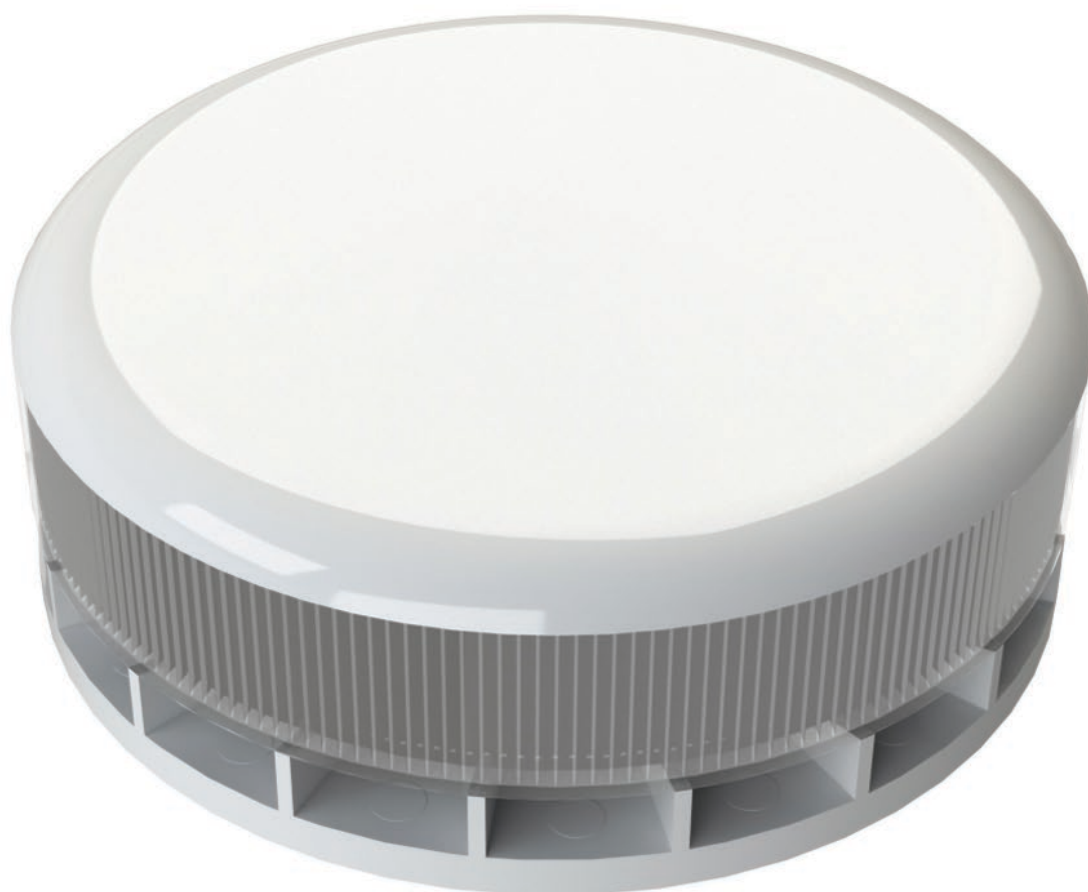


DATA SHEET

LIGHT & SOUND WARNING UNIT (LSW)

PRODUCT CODE: 31022

VERSION: Issue G - May 2020



LIGHT & SOUND WARNING UNIT (LSW)

PRODUCT DESCRIPTION

The Light and Sound Warning Unit (LSW) is designed for audible and visual signalling.

The unit is able to provide 4 tone options, making it suitable for use in numerous countries. The sound level can be adjusted if required via an onboard potentiometer.

SPECIFICATION

Input Voltage

24 – 30VDC

Current Consumption

Maximum 6mA

Material

94V0 rated ABS

Body Colour

White

Lens Colour

Clear (Red output)

Operating Temperature

-10°C to 55°C

Dimensions

100mm (D) x 36mm (H)

Weight

144g

IP Rating

IP21C

Location

Internal



**BS 8524
compliant**

Coopers Fire Ltd
Ignis House,
Houghton Avenue,
Waterlooville, Hampshire
PO7 3DU.
United Kingdom

Phone: +44 (0)2392 454 405
Email: info@coopersfire.com
Web: www.coopersfire.com

Coopers Fire Ltd has a policy of continuous product improvement. As such we reserve the right to change design and specifications without prior notice.

Please check our website for the latest information