

DATA SHEET GREEN DOME EXIT BUTTON (ERB-DOME)

PRODUCT CODE: 29181

UNICLASS: L4231

EPIC: D25

VERSION: Issue D - May 2020

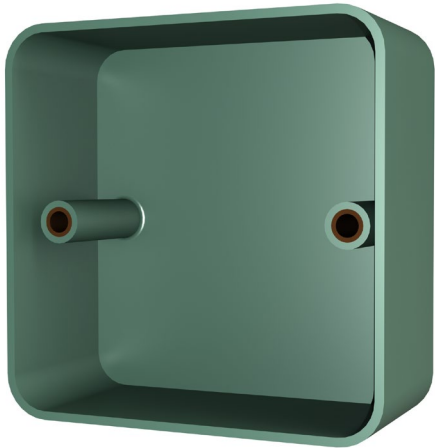


GREEN DOME EXIT BUTTON

KEY FEATURES

- Compliant to BS 8524:2013.
- Can be used with standard recessed single gang back box or surface mounted.
- Allen Key type secure screw.

SURFACE MOUNT OPTION



Cable entry on rear and all sides of product.

Back box dimensions

90mm(H) x 90mm(W) x 26mm(D)

SPECIFICATION

Input Voltage

24V AC/DC

Current Rating

Maximum 4A

Material

Stainless Steel Plate

Colour

Green (Button & Back box)

Operating Temperature

-20°C to 65°C (Internal Use)

Dimensions

85mm(H) x 85mm(W) x 41mm(D)

Weight

240g

IP Rating

IP 66

Location

Internal



Coopers Fire Ltd
Ignis House,
Houghton Avenue,
Waterlooville, Hampshire
PO7 3DU.
United Kingdom

Coopers Fire Ltd has a policy of continuous product improvement. As such we reserve the right to change design and specifications without prior notice.

Phone: +44 (0)2392 454 405
Email: info@coopersfire.com
Web: www.coopersfire.com

Please check our website for the latest information

© Coopers Fire Ltd. All content and products are copyright of Coopers Fire Ltd. Registered in England Number: 2010274. Multiple patents granted and pending.