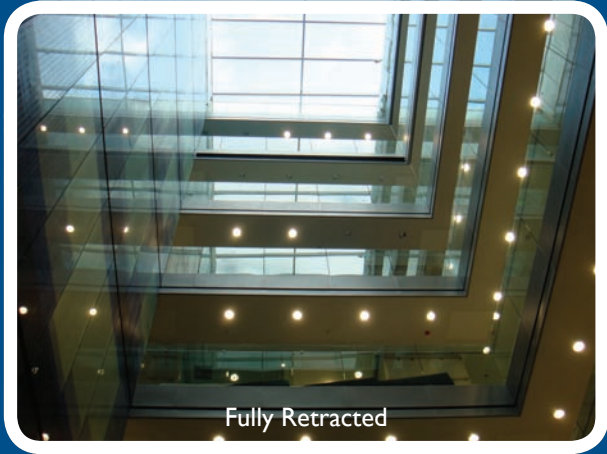




# THE WORLD'S LEADING FIRE & SMOKE CURTAIN SPECIALISTS



Fully Retracted

## FireMaster

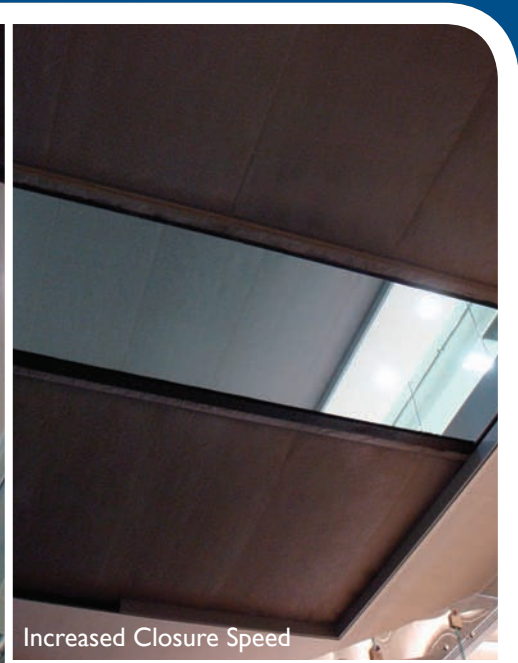
AUTOMATIC FIRE CURTAINS

### NVS™ HORIZONTAL

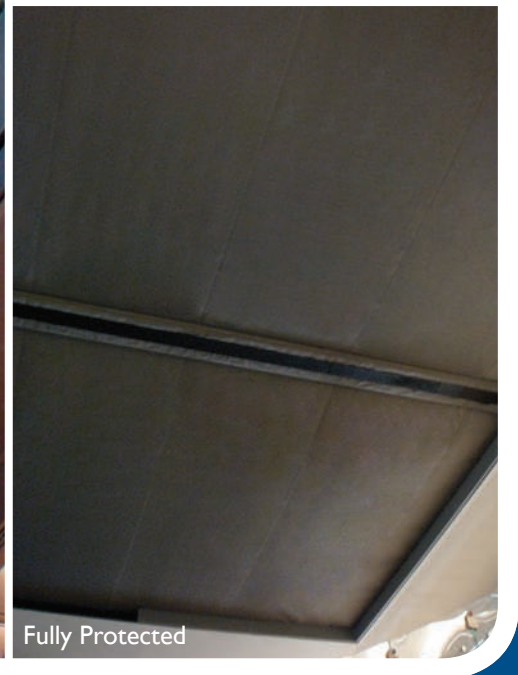
NO VISIBLE SUPPORTS



Commencing Simultaneous Deployment



Increased Closure Speed



Fully Protected

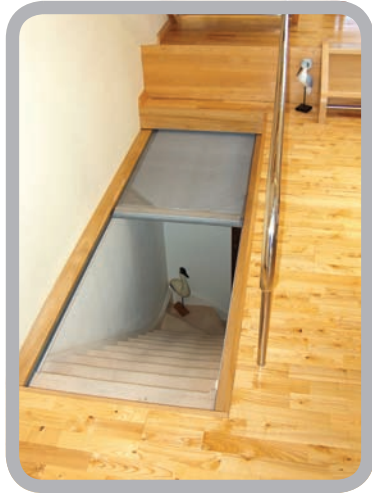
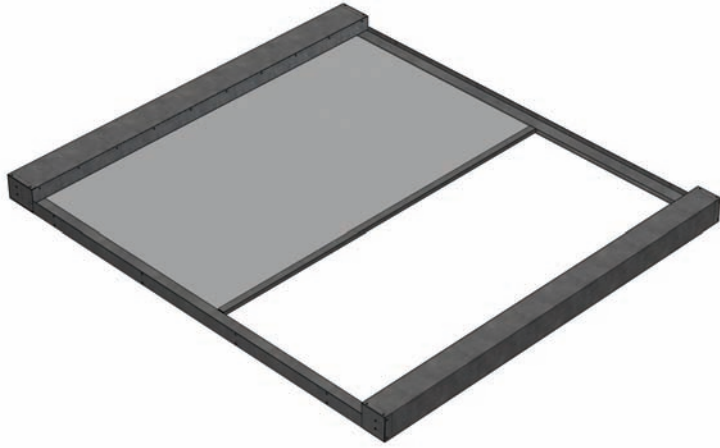
THE WORLD'S LARGEST 'INVISIBLE' HORIZONTAL FIRE CURTAIN INSTALLATION - 4,410ft²/410m²

# WHAT ARE AUTOMATIC HORIZONTAL FIRE CURTAINS AND HOW DO THEY WORK?

Automatic Horizontal Fire Curtains comprise technologically advanced fire-resistant fabric roller barriers encased in a compact steel housing. Curtains remain invisibly retracted until activated by an alarm or detector signal.

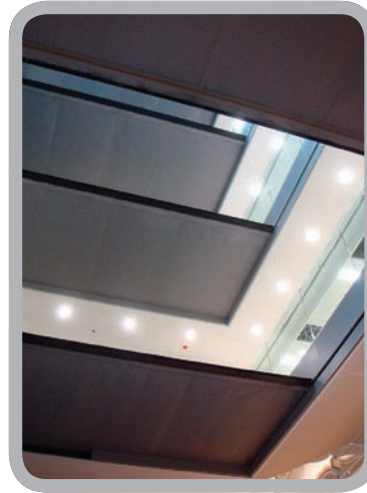
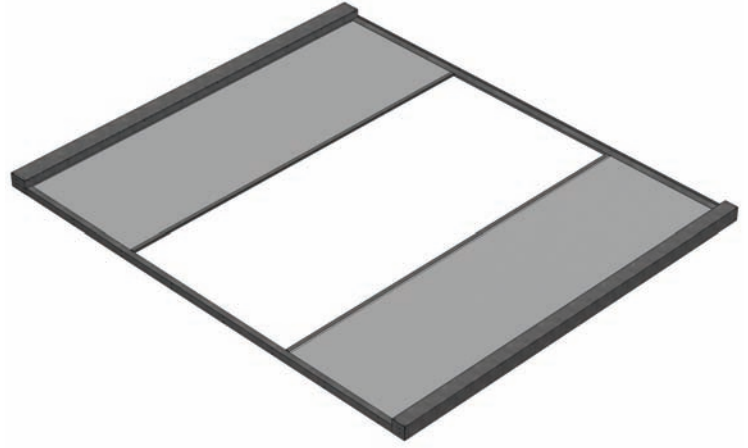
At this time they close safely to their operational position where they stop and control the spread of fire in a building.

## SIMPLEX (Single Curtain Assembly)



Suitable for smaller openings, domestic dwellings & skylights etc

## DUPLEX (Double Curtain Assembly)

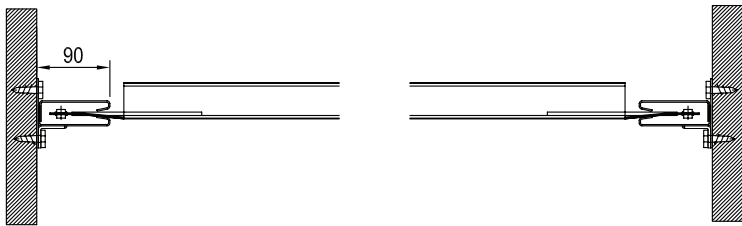


Suitable for large openings including expansive atria

Complete closure in half the time

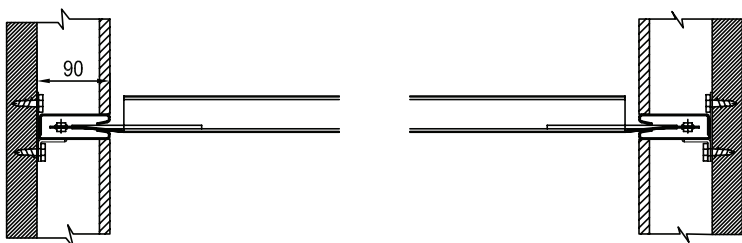
## CONCEALMENT

### Standard exposed fitting

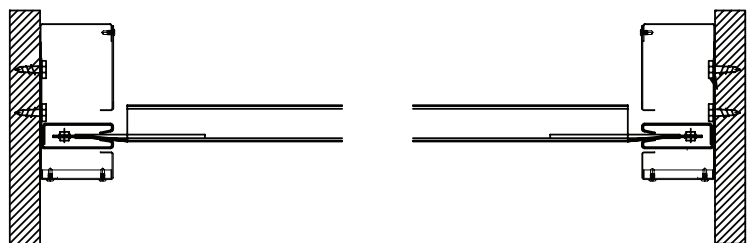


The units can either be face fixed against the surface so that the frame is visible or reveal fitted so the unit is recessed into the wall structure and disguised from view.

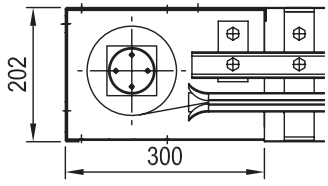
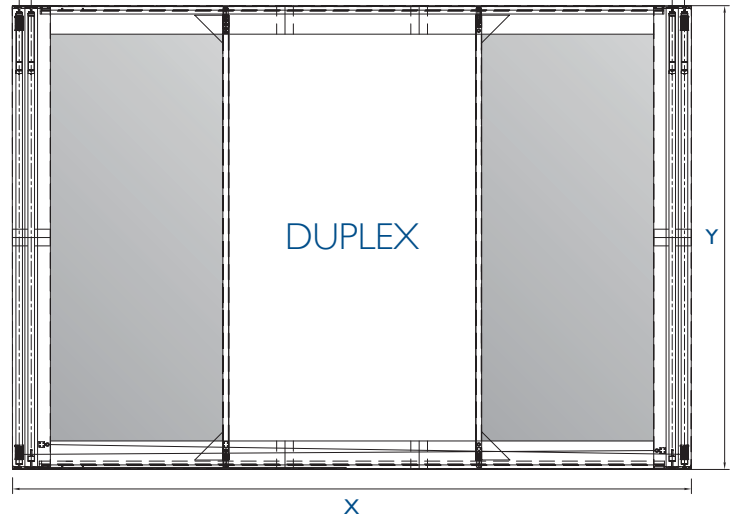
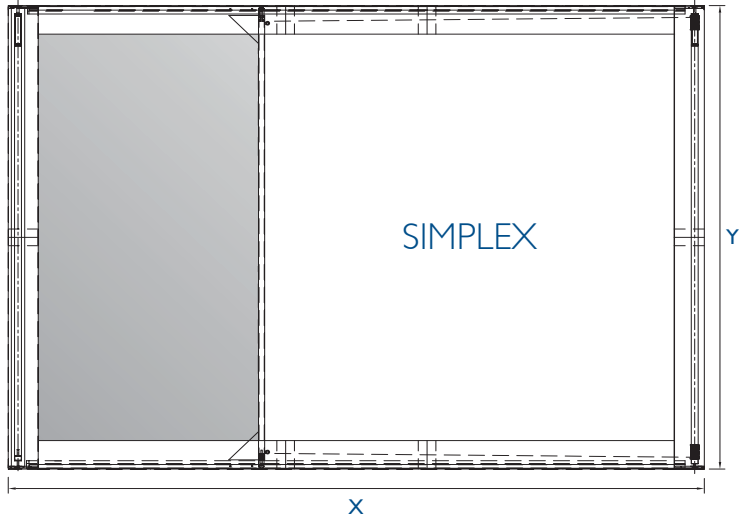
### Hidden by fire rated board



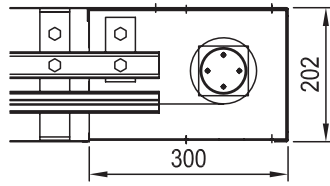
### Enclosed in steel surround



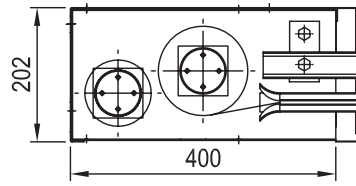
# SIZES



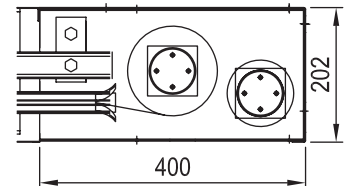
Motor End Detail



Bobbin End Detail



Motor & Bobbin Detail



Motor & Bobbin Detail

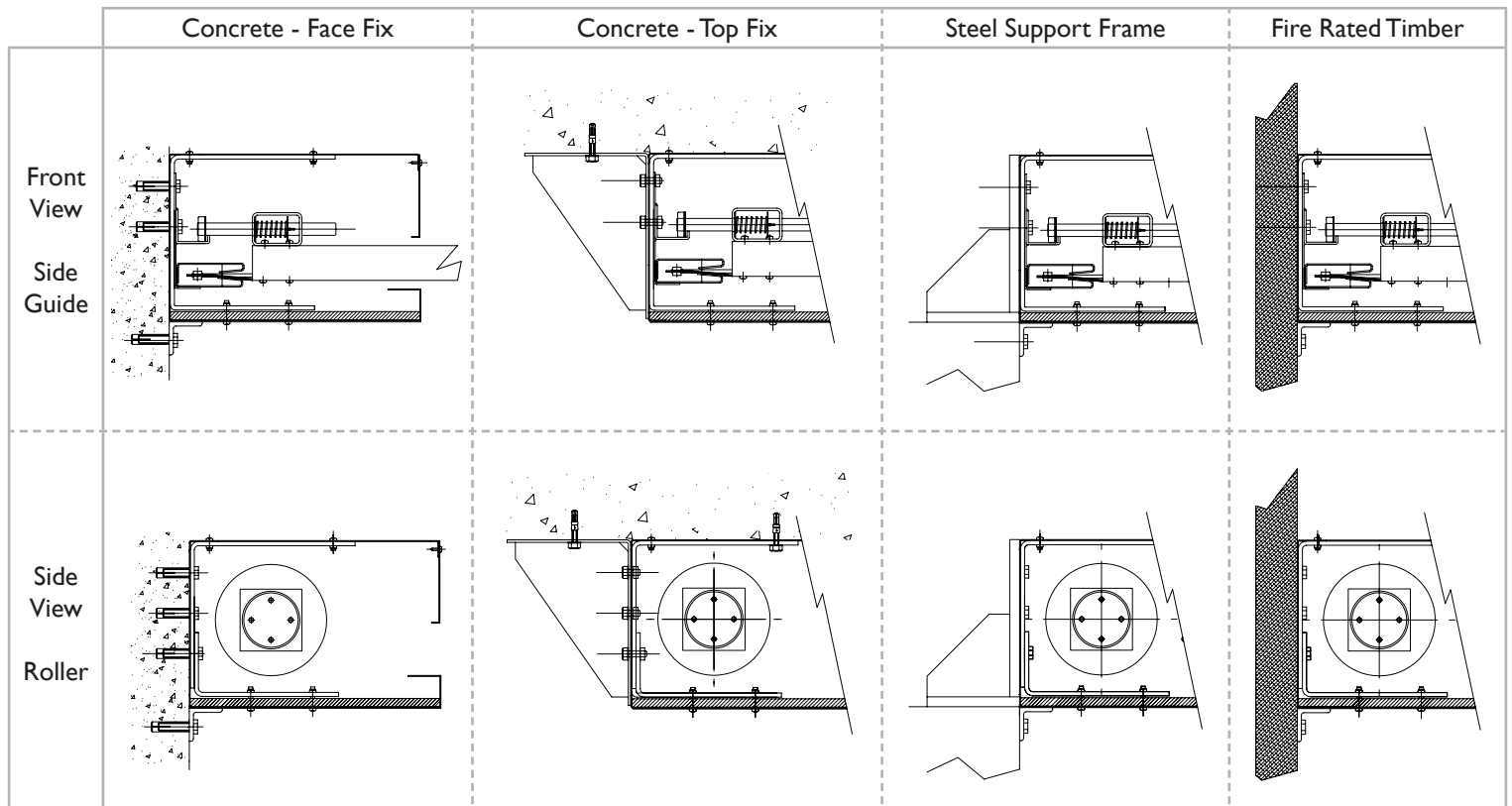
## STANDARD SIZE RANGE AVAILABLE\*

	SIMPLEX		DUPLEX	
	X value	Y value	X value	Y value
Maximum Size (Metres)	7	5	14	5
Minimum Size (Metres)	4	3	7	1.5

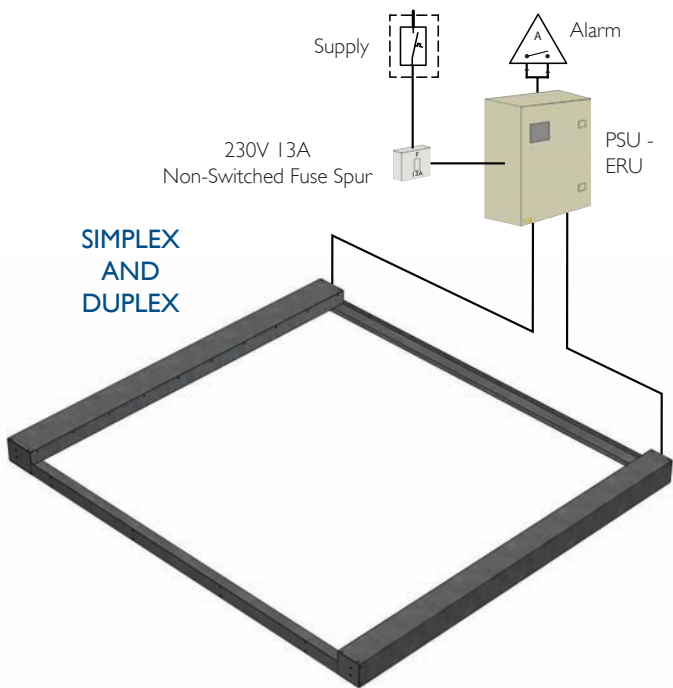
\* If you require any size outside of the maximum or minimum sizes of this range for either product please contact us as we have MAXI and MINI models of these products to expand the range. The MAXI can provide 90 minutes FR for up to 7m x 11m.

# INSTALLATION

There are 4 different installation / fixing methods available depending on the material / frame being fixed to:



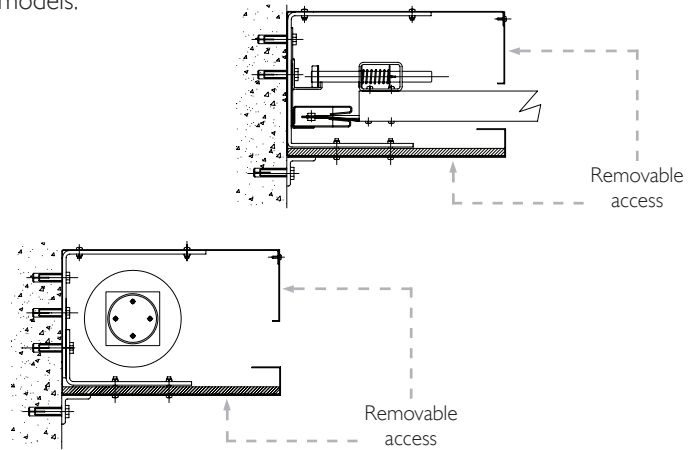
# CONTROLS



Controls are custom made to be fully compatible with both existing alarm systems and the number of curtain units installed, whether simplex or duplex assemblies. When an alarm signal is detected, the control panel will automatically trigger all the curtain systems to deploy.

## ACCESS

Removable access is in the same place on all horizontal fire curtain models.



## CONTROLS SPECIFICATION

Power Supply:	230V AC 50Hz dedicated supply via 13Amp un-switched fuse spur
Drive System:	Coopers 24V dc motors
Battery Back-Up:	2 x 12V 12A/h lead acid batteries
Alarm Signal:	Normally closed volt-free contacts Open on activation
Test Facility:	Key switch and Reset button on PZCP
Display:	Power On, Alarm Active and Alarm Off
Power Supply Unit - Panel Size:	400mm(w) x 500mm(h) x 210mm(d)

## FABRIC SPECIFICATION

FireMaster (Standard) EFP 4/1000 is a long established, high performance fire textile composite material of stainless steel reinforced woven glass fibre. The special EFP coating contains a micronised aluminium enriched polymer, which when exposed to fire, is absorbed into the surface of the curtain to provide high temperature performance.

## TESTING

Coopers FireMaster Horizontal Fire Curtain is classified to E120 EW30 in accordance with BS EN 13501-2 and is tested for 120 mins FR in accordance with BS EN 1364-2 and for 1,000 cycle reliability to BS EN 12605 and classified as C1 to BS EN 14600.



## DON'T BE LIABLE!

### Does your system comply with fire regulations?

- Do not jeopardise your insurance or your Professional Indemnity. Do not be fooled by systems which are not properly tested. This is a life safety product!
- Compromise on safety and you compromise on life. Demand to see full testing and certification.
- Remember: Corporate & Personal Manslaughter Legislation.

### More importantly... Is it Fit For Purpose?

The Coopers FireMaster Horizontal Fire Curtain:

- has been Reliability tested for 1,000 cycles,
- has been Impact tested after a full 120 mins FR test to BS EN 1364-2 by dropping a 50Kg weight from a 1m height. The fire curtain remained intact and fit for purpose,
- has been formally assessed to increased dimensions up to 7x1m

Your Fire Curtain must comply with BSi PAS 121:2007 to be both tested & Fit For Purpose. You must insist on this!

"When used as part of a fire engineered design, fire curtain barrier assemblies become a critical element of that design. If fire curtain barriers do not deploy to their operational position, the fire engineered system will not perform as designed."

"If batteries are used as the primary or secondary power source, the batteries shall be subjected to an active battery test at intervals of not exceeding 60 mins."

Coopers Fire Ltd, Edward House, Penner Road, Havant, Hampshire PO9 1QZ UK | Registered in England Number: 2010274

Phone: +44(0) 23 9245 4405 | Fax: +44(0) 23 9249 2732

Email: info@coopersfire.com | Web: www.coopersfire.com



Assessed to ISO 9001:2008  
FM 22356

Assessed to ISO 9001:2008  
Certificate number: 538 issue 5

